

KARIBAN

REFERENCE : K6133

SIZES : 34_36_38_40_42_44_46

COMPOSITION :

Main fabric : Polyester / Cotton / Elastane interlock 80/18/2 -
250 80%polyester/18%cotton/2%elastane

Main fabric : Polyester / Viscose / Elastane interlock 74/24/2 -
250 74%polyester/24%viscose/2%elastane

Lining : Polyester Cotton - 80/20 - 95 Tone on tone

For fronts,back and inside pockets bag

Lining : Polyester taffeta - 50 For sleeves and top pocket sacks

Lining : Polyester taffeta - 50 Insert between front facing and
lining 100%polyester

WEIGHT :

Main fabric : 250 gsm

Main fabric : 250 gsm

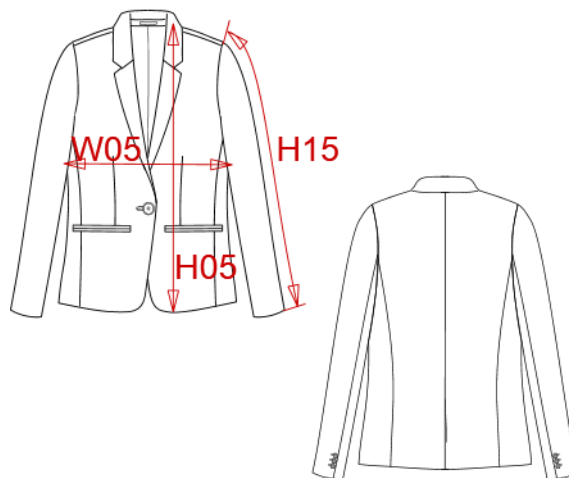
Lining : 95 gsm

Lining : 50 gsm

Lining : 50 gsm

ARTICLE WEIGHT :

475 gr/pc



DESCRIPTION
Français : Veste maille femme
English : Ladies' knit jacket
Nederlands : Damesjas van tricot
Deutsch : Damen-Strickjacke
Español : Chaqueta de punto para mujer
Italiano : Giacca donna in maglia
Português : Blazer em malha de senhora

COLORS	PANTONE SERIGRAPHIE
Light grey heather	Based on 877C
Night navy heather	Based on 433C

MEASUREMENT							
Description	34	36	38	40	42	44	46
H05 (L) Hauteur totale au devant / Total height at front	64	65	66	67	68	69	70
W05 (L) 1/2 largeur poitrine à 1.5cm de l'emmanchure / 1/2 chest width at 1.5cm below armhole	41,50	43,50	45,50	47,50	49,50	51,50	53,50
H15L (L) Longueur manche longue / Long sleeve length	60,75	61,75	62,75	63,75	64,75	65,75	66,75

CARE LABEL

PACKING	
Box	10 pcs / box 34 => L:75cm W:40cm H:20cm GW:7.16kg NW:5.61kg 36 => L:75cm W:40cm H:20cm GW:7.34kg NW:5.79kg 38 => L:75cm W:40cm H:20cm GW:7.50kg NW:5.95kg 40 => L:75cm W:40cm H:20cm GW:7.75kg NW:6.20kg 42 => L:75cm W:40cm H:20cm GW:7.90kg NW:6.35kg 44 => L:75cm W:40cm H:20cm GW:8.15kg NW:6.60kg 46 => L:75cm W:40cm H:20cm GW:8.25kg NW:6.70kg