

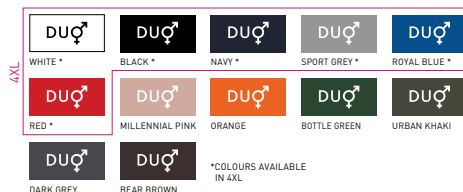
# B&C #E150 LSL - TU 05T



## REGULAR FIT

The modern tubular long-sleeve T-shirt with contemporary look and the unchanged 150g fabric quality by B&C for 20 years.

Your #150bestchoice #longsleeve #unisex



100% pre-shrunk ring-spun cotton

SPORT GREY: 85% PRE-SHRUNK RING-SPUN COTTON - 15% VISCOSE

Single Jersey

145 g/m<sup>2</sup>

S - M - L - XL - 2XL - 3XL - 4XL\*

10 pcs/pack & 50 pcs/carton

\* ONLY AVAILABLE IN WHITE, BLACK, NAVY, SPORT GREY, ROYAL BLUE AND RED

DUO  
CONCEPT

with B&C #E150 LSL /w.

Want the same style/shape but in a heavier fabric?

TRY THE B&C #E190 LSL

Want the same style/shape but in short sleeve?

TRY THE B&C #E150

### #Style / Fit

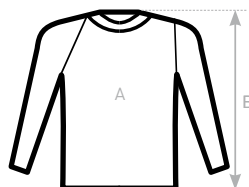
- Mainstream contemporary fit #allpurposes
- Tubular construction #movement
- Thin collar rib for modern appearance #uptodate
- Back necktape for a clean finish #comfort
- Same 12 colours for men & women #perfectduo
- 7 sizes - S to 4XL #fitsall
- Satin label #ultrasofttouch

### #Quality / Handfeel

- Made of 100% cotton #protectmyskin #Oeko-Tex100
- Resistant fabric and soft handfeel #ringspun
- Unchanged proven B&C quality fabric #20years
- Middle weight fabric 150 gsm #whatevertheweather

### #Printability / Decoration

- Very smooth and even surface for bright and crisp printing results #details
- Tested and approved for all standard printing techniques applicable on cotton #beinspired
- Folded in box to ease the decoration process #makemylifeeasy



### SIZES [CM]

B&C #E150 LSL TU 05T	XS	S	M	L	XL	2XL	3XL	4XL	5XL
A HALF CHEST	-	50	53	56	59	62	65	70	-
B BODY LENGTH FROM NECK POINT	-	70	72	74	76	78	80	82	-



OEKO-TEX®  
CONFIDENCE IN TEXTILES  
STANDARD 100  
1501003 Centexbel  
Tested for harmful substances.  
www.oeko-tex.com/standard100