

KARIBAN

REFERENCE : K241

SIZES : S_M_L_XL_XXL_3XL_4XL

COMPOSITION :

Main fabric : Combed cotton single pique - 220 100%cotton

Main fabric : Combed Cotton / Viscose single pique 90/10 - 220
90%cotton / 10%viscose

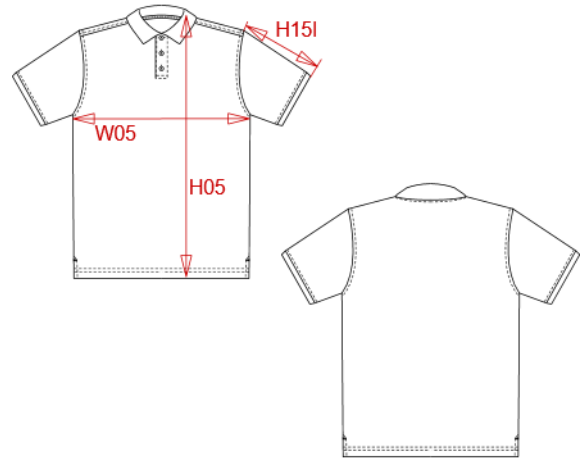
WEIGHT :

Main fabric : 220 gsm

Main fabric : 220 gsm

ARTICLE WEIGHT :

240 gr/pc



DESCRIPTION								COLORS		PANTONE SERIGRAPHIE	
Français : Polo homme manches courtes								White	White		
English : Men's short sleeve pique polo shirt								Black	Black		
Nederlands : Heren polo met korte mouwen								Navy	433C		
Deutsch : Herren kurzarm polo hemd pique								Red	200C		
Español : Polo de manga corta								Dark grey	447C		
Italiano : Polo pique' uomo maniche corte								Dark khaki	418C		
Português : Polo pique manga curta								Sky blue	278C		
MEASUREMENT								Orange	1585C		
Description	S	M	L	XL	XXL	3XL	4XL	Yellow	1235C		
H05 (M) Hauteur totale / Total height	70	72	74	76	78	80	82	Light royal blue	653C		
W05 (M) 1/2 largeur poitrine / 1/2 chest width	50	53	56	59	62	65	68	Chocolate	439C		
H151 (M) Longueur manche avec bord côte / Sleeve length with rib	22,75	23,50	24,25	25	25,75	26,50	27,25	Tropical blue	7468C		
CARE LABEL											
PACKING											
Box	25 pcs / box S => L:60cm W:40cm H:18cm GW:7.20kg NW:6.20kg M => L:60cm W:40cm H:18cm GW:7.70kg NW:6.70kg L => L:60cm W:40cm H:18cm GW:8.00kg NW:7.00kg XL => L:60cm W:40cm H:18cm GW:8.40kg NW:7.40kg XXL => L:60cm W:40cm H:20cm GW:8.90kg NW:7.90kg 3XL => L:60cm W:40cm H:20cm GW:9.20kg NW:8.20kg 4XL => L:60cm W:40cm H:20cm GW:9.80kg NW:8.80kg										
								Oxford grey	Based on Cool gray 7C		
								Kelly green	7727C		
								Fuchsia	7425C		
								Purple	7447C		
								Wine	504C		
								Lime	367C		
								Forest green	5605C		
								Light sand	480C		