

KARIBAN

REFERENCE : K589

SIZES : XS_S_M_L_XL_XXL

COMPOSITION :

Main fabric : Linen / Cotton poplin 55/45 - 130 55%linen / 45% cotton

WEIGHT :

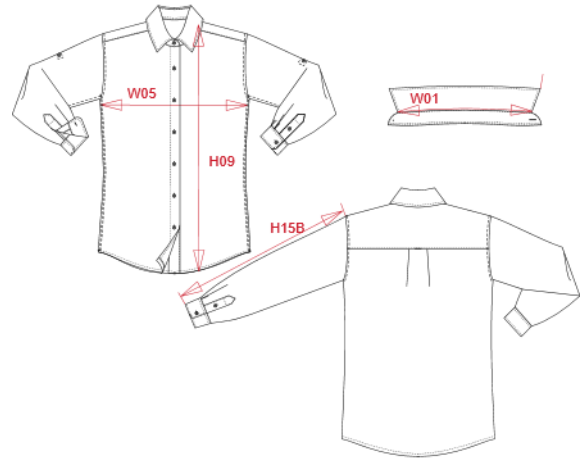
Main fabric : 130 gsm

TECHNICAL DETAIL :

Garment wash

ARTICLE WEIGHT :

175 gr/pc



DESCRIPTION	COLORS	PANTONE SERIGRAPHIE
Français : Chemise lin et coton manches longues femme	White	White
English : Ladies' long sleeve linen and cotton shirt	Navy	433C
Nederlands : Damesoverhemd van linnen met lange mouwen		
Deutsch : Langarm-Leinenhemd für Damen		
Español : Camisa de lino de manga larga para mujer		
Italiano : Camicia donna lino e cotone manica lunga		
Português : Camisa de linho de senhora de manga comprida		

MEASUREMENT						
Description	XS	S	M	L	XL	XXL
W01 (L) Longueur encolure / Neckline length	37,30	38,55	39,80	41,05	42,30	43,55
H09 (L) Hauteur totale devant / Front total height	64	66	68	70	72	74
W05 (L) 1/2 largeur poitrine / 1/2 chest width	45	48	51	54	57	60
H15B (L) Longueur manche avec poignet / Sleeve length with cuff	60,50	61,50	62,50	63,50	64,50	65,50

CARE LABEL				

PACKING	
Box	20 pcs / box XS => L:60cm W:40cm H:20cm GW:6.92kg NW:5.28kg S => L:60cm W:40cm H:20cm GW:7.14kg NW:5.50kg M => L:60cm W:40cm H:20cm GW:7.36kg NW:5.72kg L => L:60cm W:40cm H:20cm GW:7.56kg NW:5.92kg XL => L:60cm W:40cm H:20cm GW:7.82kg NW:6.18kg XXL => L:60cm W:40cm H:20cm GW:8.10kg NW:6.46kg