

KARIBAN

REFERENCE : K651

SIZES : XS_S_M_L_XL_XXL

COMPOSITION :

Fabric 1 : 3 layers Softshell (Plain weave/Micropolar fleece)
Polyester / Elastane 95/5 - 300 .

Lining : Polyester 210T - 60 For quilted body and hood lining,
hood tunnel and sleeve lining 100%polyester

Lining 2 : Polyester polytricot - 120 For pocket sacks and inner
front placket. 100%polyester

Padding : Polyfil 120 For quilted body lining 100%polyester

Padding : Polyfil 100 For quilted sleeve lining 100%polyester

WEIGHT :

Fabric 1 : 300 gsm

Lining : 60 gsm

Lining 2 : 120 gsm

Padding : 120 gsm

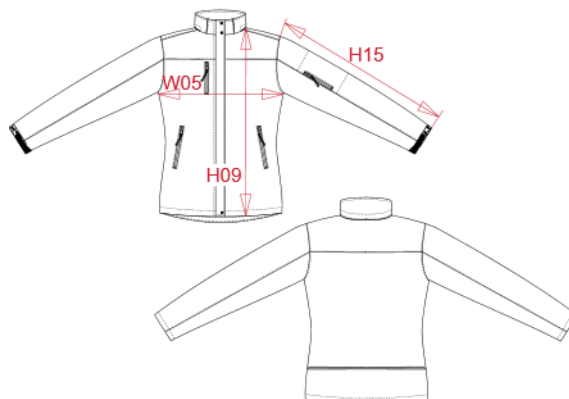
Padding : 100 gsm

TECHNICAL DETAIL :

BR: 3000gsm/24h / WP: 8000mm

ARTICLE WEIGHT :

980 gr/pc



DESCRIPTION
Français : Parka softshell doublée capuche femme
English : Ladies' hooded softshell lined parka
Nederlands : Gewatteerde softshell damesparka met capuchon
Deutsch : Damenparka Softshell wattiert mit Kapuze
Español : Parka Softshell forrada con capucha para mujer
Italiano : Parka donna softshell imbottito con cappuccio
Português : Parka Softshell acolchoada de senhora com capuz

COLORS	PANTONE SERIGRAPHIE
Black	Black
Navy	433C
Titanium	7540C

MEASUREMENT							
Description	XS	S	M	L	XL	XXL	
H09 (L) Hauteur totale devant / Front total height	65	67	69	71	73	75	
W05 (L) 1/2 largeur poitrine à 1.5cm de l'emmanchure / 1/2 chest width at 1.5cm below armhole	46	49	52	55	58	61	
H15L (L) Longueur manche longue / Long sleeve length	60	61	62	63	64	65	

CARE LABEL

PACKING	
Box	10 pcs / box XS-S => L:50cm W:35cm H:38cm GW:11.70kg NW:10.70kg M-L => L:55cm W:37cm H:38cm GW:12.80kg NW:11.70kg XL-XXL => L:60cm W:40cm H:38cm GW:14.20kg NW:13.00kg