

KARIBAN

REFERENCE : KV2306

SIZES : S_M_L_XL_XXL_3XL

COMPOSITION :

Main fabric : Peached and brushed Cotton / Polyester fleece
80/20 - 350 For main fabric, hood lining and hood binding. 80%
cotton / 20%polyester

Main fabric : Peached and brushed Cotton / Polyester / Viscose
fleece 79/20/1 - 350 For main fabric, hood lining and hood
binding. 79%cotton/20%polyester/1%viscose

WEIGHT :

Main fabric : 350 gsm

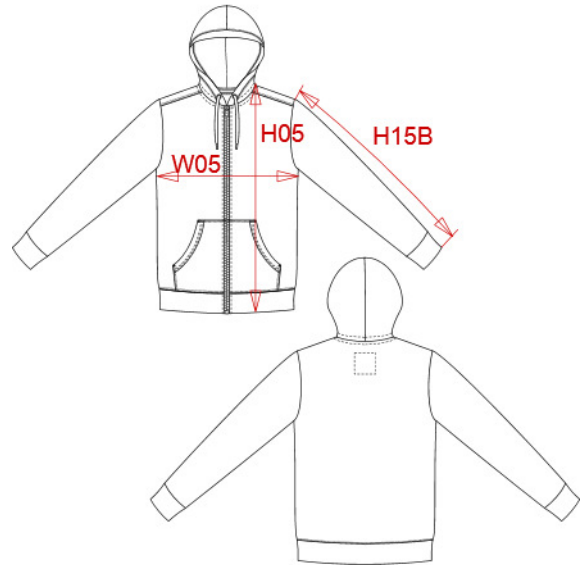
Main fabric : 350 gsm

TECHNICAL DETAIL :

Peached finish

ARTICLE WEIGHT :

860 gr/pc



DESCRIPTION
Français : Sweat-shirt vintage zippé à capuche homme
English : Men's vintage zipped hooded sweatshirt
Nederlands : Vintage herensweater met rits en capuchon
Deutsch : Herren Kapuzensweatshirt mit Reißverschluss
Español : SUDADERA VINTAGE - CREMALLERA Y CAPUCHA para hombre
Italiano : Felpa uomo vintage full zip con cappuccio
Português : Casaco sweatshirt vintage de homem com capuz

COLORS	PANTONE SERIGRAPHIE
Vintage navy	533C
Vintage charcoal	447C
Vintage dark red	202C
Ash heather	Based on Warm gray 1C
Slub grey heather	Based on 7539C
Night blue heather	Based on 432C

MEASUREMENT						
Description	S	M	L	XL	XXL	3XL
H05 (M) Hauteur totale / Total height	71	73	75	77	79	81
W05 (M) 1/2 largeur poitrine à 1.5cm de l'emmanchure / 1/2 chest width at 1.5cm below armhole	52	55	58	61	64	67
H15B (M) Longueur manche avec poignet / Sleeve length with cuff	66,25	67,25	68,25	69,25	70,25	71,25

CARE LABEL

PACKING	
Box	16 pcs / box S => L:60cm W:40cm H:36cm GW:13.8kg NW:12.2kg M => L:60cm W:40cm H:36cm GW:14.8kg NW:13.2kg L => L:60cm W:40cm H:38cm GW:15.4kg NW:13.8kg XL => L:60cm W:40cm H:38cm GW:16kg NW:14.4kg XXL => L:60cm W:40cm H:40cm GW:16.4kg NW:14.8kg 3XL => L:60cm W:40cm H:40cm GW:17.5kg NW:15.9kg