

# PROACT.®

REFERENCE : PA359

SIZES : XS\_S\_M\_L\_XL\_XXL

**COMPOSITION :**

Main fabric : Polyester / Viscose / Elastane Tech fleece 79/15/6

- 310 79%polyester / 15%viscose / 6%elastane

Main fabric : Polyester / Elastane Tech fleece 94/6 - 310 94%  
polyester / 6%elastane

Fabric : Polyester / Viscose single jersey 65/35 - 145 For hood  
lining, pocket sack and necktape 65%polyester / 35%viscose

**WEIGHT :**

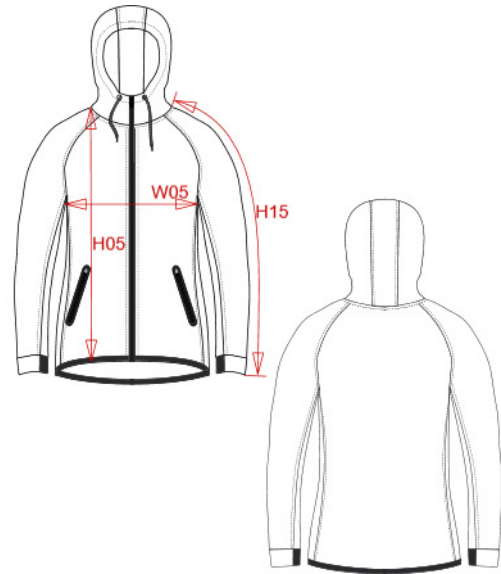
Main fabric : 310 gsm

Main fabric : 310 gsm

Fabric : 145 gsm

**ARTICLE WEIGHT :**

630 gr/pc



DESCRIPTION
<b>Français :</b> Veste capuche femme
<b>English :</b> Ladies' performance hooded sweatshirt
<b>Nederlands :</b> Damesjas met capuchon performance
<b>Deutsch :</b> Damen-Funktions-Hoodie
<b>Español :</b> Chaqueta de chándal performance con capucha de mujer
<b>Italiano :</b> Giacca Performance Donna con cappuccio
<b>Português :</b> Casaco com capuz de senhora performance

COLORS	PANTONE SERIGRAPHIE
Deep grey heather	Based on 447C
Black	Black
French navy heather	Based on 432C
Ash heather	Based on Warm gray 1C

MEASUREMENT						
Description	XS	S	M	L	XL	XXL
<b>H05 (L)</b> Hauteur totale au milieu devant/ Total height on middle front	61,75	63,75	65,75	67,75	69,75	71,75
<b>W05 (L)</b> 1/2 largeur poitrine / 1/2 chest width	43	46	49	52	55	58
<b>H15L (L)</b> Longueur manche longue avec poignet / Long sleeve length with cuff	69	70,50	72	73,50	75	76,50

CARE LABEL

PACKING	
Box	15 pcs / box XS => L:50cm W:35cm H:25cm GW:9.2kg NW:8.2kg S => L:50cm W:35cm H:25cm GW:9.6kg NW:8.6kg M => L:50cm W:35cm H:25cm GW:10.3kg NW:9.3kg L => L:50cm W:35cm H:25cm GW:10.8kg NW:9.8kg XL => L:50cm W:35cm H:25cm GW:11.5kg NW:10.5kg XXL => L:50cm W:35cm H:25cm GW:12kg NW:11kg