

B&C SUPERHOOD /WOMEN - JW 941

HEAVY WEIGHT JACKET / DOWN JACKET



Heavyweight puffer bomber with fashionable contrasted inner lining

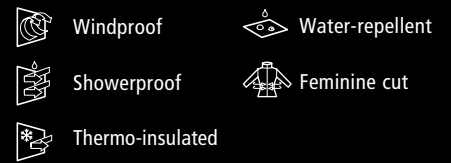
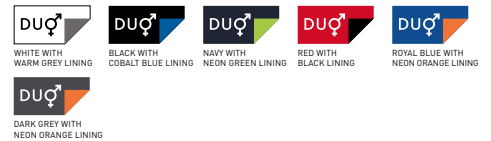
POLYESTER 300T TAFFETA

Outer layer: 100% polyester 300T taffeta

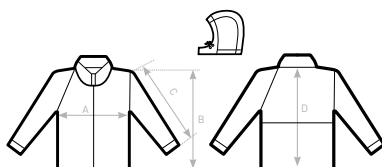
Inner layer: 100% polyester padded taffeta with feather touch padding

XS - S - M - L - XL - 2XL

1 pc/pack & 10 pcs/carton



- 1- Adjustable, removable padded hood
 - 2- Left chest and back (shoulder to middle back) panels with hidden zips for easy decoration access
 - 3- Standing collar, full length internal stormflap and cotton feel 2x2 rib on cuffs and hem for wind protection
 - 4- Bomber style, retail cut for a contemporary image
 - 5- 2 zipped hand pockets
- Fabric tested for the following decoration techniques: screen printing, heat transfer, sublimation (for white only) and embroidery



SIZES [CM]

B&C SUPERHOOD /WOMEN JW 941	XS	S	M	L	XL	2XL	3XL
A HALF CHEST	49	52	55	58	61	64	-
B BODY LENGTH FROM NECK POINT	61	63	65	67	69	71	-
C SLEEVE LENGTH	65,5	67	68,5	70	71,5	73	-
D CENTER BACK LENGTH	59	61	63	65	67	69	-

B&C
COLLECTION
OUTER WEAR /UNIT