

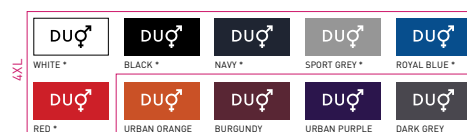
B&C #E190 LSL - TU 07T



REGULAR FIT

The modern tubular long-sleeve T-shirt with contemporary look and the unchanged 190g fabric quality by B&C for 20 years.

Your **#190bestchoice** **#longsleeve** **#unisex**





*COLOURS AVAILABLE IN 4XL


 100% pre-shrunk ring-spun cotton

SPORT GREY: 85% PRE-SHRUNK RING-SPUN COTTON - 15% VISCOSE

 Single Jersey

 185 g/m²

 S - M - L - XL - 2XL - 3XL - 4XL *

 10 pcs/pack & 50 pcs/carton

* ONLY AVAILABLE IN WHITE, BLACK, NAVY, SPORT GREY, ROYAL BLUE AND RED



DUO
CONCEPT

with B&C #E190 LSL /w.

Want the same style/shape but in a lighter fabric?

TRY THE B&C #E150 LSL

Want the same style/shape but in short sleeve?

TRY THE B&C #E190

#Style / Fit

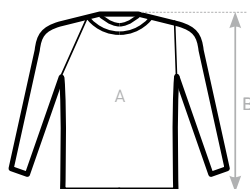
- Mainstream contemporary fit **#allpurposes**
- Tubular construction **#movement**
- Thin collar rib for modern appearance **#uptodate**
- Back necktape for a clean finish **#comfort**
- Same 10 colours for men & women **#perfectduo**
- 7 sizes - S to 4XL **#fitsall**
- Satin label **#ultrasofttouch**

#Quality / Handfeel

- Made of 100% cotton **#protectmyskin**
- **#Oeko-Tex100**
- Resistant fabric and soft handfeel **#ringspun**
- Unchanged proven B&C quality fabric **#20years**
- Heavy weight fabric 190 gsm **#whatevertheweather**

#Printability / Decoration

- Very smooth and even surface for bright and crisp printing results **#details**
- Tested and approved for all standard printing techniques applicable on cotton **#beinspired**
- Folded in box to ease the decoration process **#makemylifeeasy**



SIZES [CM]

B&C #E190 LSL TU 07T	XS	S	M	L	XL	2XL	3XL	4XL	5XL
A HALF CHEST	-	50	53	56	59	62	65	70	-
B BODY LENGTH FROM NECK POINT	-	70	72	74	76	78	80	82	-



OEKO-TEX®
CONFIDENCE IN TEXTILES
STANDARD 100
1501003 Certexbel
Tested for harmful substances
www.oeko-tex.com/standard100