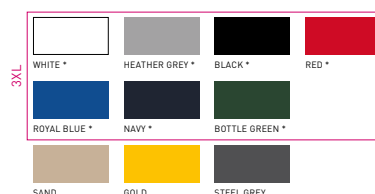


# B&C SET IN - WU 600



## REGULAR FIT

- Crew neck sweatshirt
- Perfect Sweat Technology: high quality fabric for perfect printability, comfort and durability
- Collar, cuffs and bottom hem in 1x1 rib with elastane
- Modern cut
- Side seams



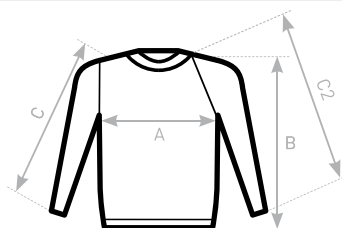
\* COLOURS AVAILABLE IN 3XL

- 🧶 80% ring-spun **combed** cotton - 20% polyester
- 🧶 PST / Perfect Sweat Technology  
Low Shrinkage / Brushed fleece inside
- 🧶 280 g/m<sup>2</sup>
- 🧶 S - M - L - XL - 2XL - 3XL\*
- 🧶 5 pcs/pack & 30 pcs/carton

\* ONLY AVAILABLE IN WHITE, BLACK, NAVY, RED, ROYAL BLUE, BOTTLE GREEN AND HEATHER GREY



EXISTS IN KIDS: B&C SET IN / KIDS



### SIZES [CM]

B&C SET IN WU 600	XS	S	M	L	XL	2XL	3XL
A HALF CHEST	-	53	56,5	60	63,5	67	70,5
B BODY LENGTH	-	66	68	70	72	74	76
C SLEEVE LENGTH	-	62,5	63,5	64,5	65,5	66,5	67,5



OEKO-TEX®  
CONFIDENCE IN TEXTILES  
STANDARD 100  
1501003 Certexbel  
Tested for harmful substances.  
www.oeko-tex.com/standard100