

Activewear Europe 2018



**2400**

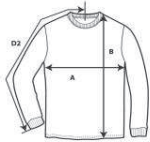
**Ultra Cotton Adult Long Sleeve T-Shirt**



**DETAILS**

**Weight** 203.0 G/SqM (White 193.0 G/SqM)  
**Content** 100% Cotton  
**Features** Classic fit  
 Seamless twin needle 2.3 cms collar  
 Taped neck and shoulders  
 Tearaway label  
 Rib cuffs  
 Twin needle bottom hem  
 Quarter-turned to eliminate center crease

**Sizes** S-2XL  
**Case Packs** S - 2XL 72 PIECES  
**Colours** 21  
**SKU's** 105



**SPECIFICATIONS**

Centimeters	Tol-	Tol+	S	M	L	XL	2XL
<b>Chest (A)</b>	2.540	2.540	45.720	50.800	55.880	60.960	66.040
<b>Length from HPS (B)</b>	2.540	2.540	71.120	73.660	76.200	78.740	81.280
<b>Sleeve length (Center back) (D2)</b>	2.540	2.540	85.090	88.900	92.710	96.520	100.330

Inches	Tol-	Tol+	S	M	L	XL	2XL
<b>Chest (A)</b>	1.000	1.000	18.000	20.000	22.000	24.000	26.000
<b>Length from HPS (B)</b>	1.000	1.000	28.000	29.000	30.000	31.000	32.000
<b>Sleeve length (Center back) (D2)</b>	1.000	1.000	33.500	35.000	36.500	38.000	39.500

**S-2XL**

COLOURS	Code	Comments
Ash Grey	093	99% Cotton, 1% Polyester
Black	036	
Cardinal Red	011	
Carolina Blue	109	
Charcoal	042	
Dark Chocolate	105	
Dark Heather	108	50% Cotton, 50% Polyester
Forest Green	033	
Gold	024	
Irish Green	167	
Light Blue	069	
Light Pink	020	
Maroon	083	
Navy	032	
Orange	037	
Red	040	
Royal	051	
S. Orange	193	50% Cotton, 50% Polyester
Safety Green	188	50% Cotton, 50% Polyester Compliant with ANSI / ISEA 107
Sport Grey	095	90% Cotton, 10% Polyester
White	030	

**CHANGES**

Total Net Change 0 SKU's