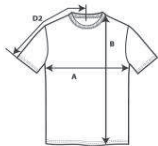


Activewear Europe 2018



DETAILS

Weight	203.0 G/SqM
Content	100% Cotton
Features	Classic fit Seamless non-topstitched 2.3 cm collar Taped neck and shoulders Tearaway label 2.3 cms double needle sleeve and bottom hems Quarter-turned to eliminate center crease
Sizes	S-5XL
Case Packs	S - 2XL 72 PIECES 3XL 36 PIECES 4XL - 5XL 12 PIECES
Colours	15
SKU's	120



SPECIFICATIONS

Inches	ToI-	ToI+	S	M	L	XL	2XL	3XL	4XL	5XL
Chest/Pecho (A)	0.750	0.750	18.000	20.000	22.000	24.000	26.000	28.000	30.000	32.000
Length from HPS (B)	0.500	0.500	28.500	29.500	30.500	31.500	32.500	33.500	34.500	35.500
Sleeve length (Center back) (D2)	0.750	0.750	15.625	17.000	18.500	20.000	21.500	22.875	24.250	25.375

S-5XL

COLOURS	Code	Comments
Black	036	
Coral Silk	256	
Daisy	098	
Graphite Heather	516	50% Cotton, 50% Polyester
Irish Green	167	
Lagoon Blue	21G	
Light Pink	020	
Ring Spun Sport Grey	295	90% Cotton, 10% Black Polyester
Sport Dark Green	771	
Sport Dark Maroon	776	
Sport Dark Navy	777	
Sport Purple	766	
Sport Royal	765	
Sport Scarlet Red	774	
White	030	

CHANGES

Additions

S, M, L, XL, 2XL, 3XL, 4XL, 5XL Black, Coral Silk, Daisy, Graphite Heather, Irish Green, Lagoon Blue, Light Pink, Ring Spun Sport Grey, Sport Dark Green, Sport Dark Maroon, Sport Dark Navy, Sport Purple, Sport Royal, Sport Scarlet Red, White

Total Net Change 120 SKU's