

Activewear Europe 2018



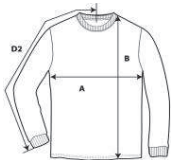
H400 NEW!

Hammer Adult Long Sleeve T-Shirt



DETAILS

Weight	203.0 G/SqM
Content	100% Cotton
Features	Classic fit Seamless non-topstitched 2.3 cms collar Taped neck and shoulders Tearaway label Rib cuffs 2.3 cms double needle bottom hem Quarter-turned to eliminate center crease
Sizes	S-5XL
Case Packs	S - 2XL 72 PIECES 3XL 36 PIECES 4XL - 5XL 12 PIECES
Colours	8
SKU's	64



SPECIFICATIONS

Inches	Tol-	Tol+	S	M	L	XL	2XL	3XL	4XL	5XL
Chest/Pecho (A)	0.750	0.750	18.000	20.000	22.000	24.000	26.000	28.000	30.000	32.000
Length from HPS (B)	0.500	0.500	28.500	29.500	30.500	31.500	32.500	33.500	34.500	35.500
Sleeve length (Center back) (D2)	1.000	1.000	33.500	35.000	36.500	38.000	39.500	39.500	40.000	40.500

S-5XL

COLOURS	Code	Comments
Black	036	
Coral Silk	256	
Graphite Heather	516	50% Cotton, 50% Polyester
Lagoon Blue	21G	
Ring Spun Sport Grey	295	90% Cotton, 10% Black Polyester
Sport Dark Navy	777	
Sport Scarlet Red	774	
White	030	

CHANGES

Additions	Black, Coral Silk, Graphite Heather, Lagoon Blue, Ring Spun Sport Grey, Sport Dark Navy, Sport Scarlet Red, White
S, M, L, XL, 2XL, 3XL, 4XL, 5XL	
Total Net Change 64 SKU's	