

JRCJames Ross Collection
WeAr the Future

James Ross Collection

www.bipensiero.com
SCHEDA TECNICA**JRC**James Ross Collection
WeAr the Future

Giubbotto Colonia Lady

**Giubbotto donna in nylon morbido, lucido e impermeabile**

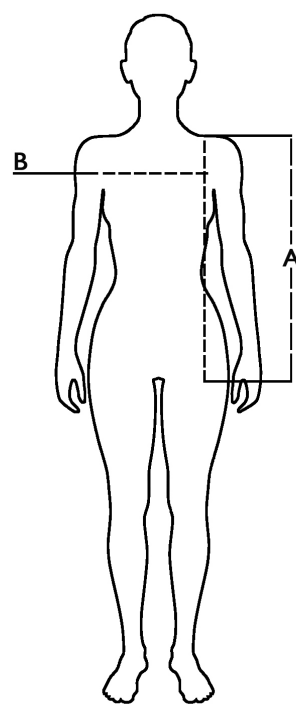
- Fodera morbida in polyester 300T
- Imbottitura in soffice poliestere (effetto piuma)
- Cerniera Gialla/Rossa/Nera
- Cappuccio imbottito
- Due tasche con zip
- Tasca interna portafoglio
- Tessuto elastico nel fondo e ai polsini




S - M - L - XL - XXL**Colori e codici articolo:**

993870 NAVY

Tabella misure

Sizes (+/- 5%)	A front length	B chest
S	61	49
M	63	51
L	65	53
XL	67	55
XXL	69	57

**Descrizione tecnica**

	Composizione / Fabric Composit	 g/m ²
Tessuto esterno/Shell	100% Poliestere	35
Fodera/Lining	100% Poliestere	35
Imbottitura/Padding	100% Poliestere	200
Imballo/Packages	 10 pcs	
Istruzioni di Lavaggio / Care Label		

Cat. DPI/PPE category I Norme **CE** e livelli di protezione/EC standards and protection levels EN ISO 13688:2013