

KARIBAN

REFERENCE : K225

SIZES : XS_S_M_L_XL_XXL_3XL_4XL

COMPOSITION :

Main fabric : Combed cotton single pique - 220 For solid colors
100%cotton

Main fabric : Combed Cotton / Viscose single pique 90/10 (for
heather colors) - 220 For heather colors 90%cotton / 10%
viscose

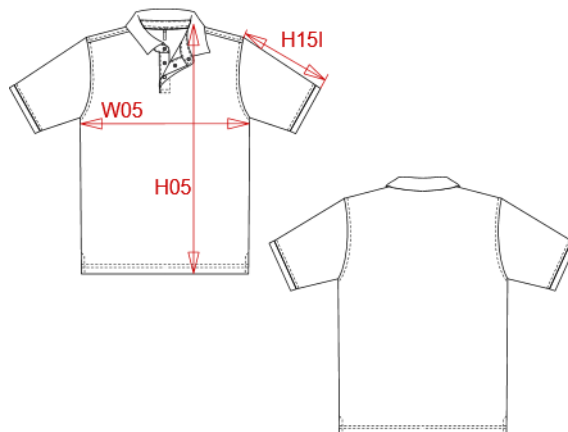
WEIGHT :

Main fabric : 220 gsm

Main fabric : 220 gsm

ARTICLE WEIGHT :

260 gr/pc



DESCRIPTION
Français : Polo col boutons pression manches courtes homme
English : Men's short sleeve stud polo shirt
Nederlands : Herenpolo met drukknopkraag en korte mouwen
Deutsch : Kurzarm-Polohemd für Herren mit Druckknopfleiste am Kragen
Español : Polo con botones de presión y manga corta para hombre
Italiano : Polo uomo manica corta con colletto con automatici
Português : Polo com molas de pressão na gola de manga curta

COLORS	PANTONE SERIGRAPHIE
White	White
Black	Black
Navy	433C
Oxford grey	Based on Cool gray 7C

MEASUREMENT									
Description	XS	S	M	L	XL	XXL	3XL	4XL	
H05 (M) Hauteur totale / Total height	68	70	72	74	76	78	80	82	
W05 (M) 1/2 largeur poitrine / 1/2 chest width	47	50	53	56	59	62	65	68	
H15l (M) Longueur manche avec bord côte / Sleeve length with rib	20,50	21,25	22	22,75	23,50	24,25	25	25,75	

CARE LABEL				

PACKING	
Box	30 pcs / box XS => L:60cm W:40cm H:18cm GW:8.10kg NW:7.10kg S => L:60cm W:40 cm H:18cm GW:8.70kg NW:7.70kg M => L:60cm W:40cm H:18cm GW:9.20kg NW:8.20kg L => L:60cm W:40cm H:18cm GW:9.60kg NW:8.60kg XL => L:60cm W:40cm H:18cm GW:10.30kg NW:9.30kg XXL => L:60cm W:40cm H:20cm GW:11kg NW:10kg 3XL => L:60cm W:40cm H:20cm GW:11.40kg NW:10.40kg 4XL => L:60cm W:40cm H:20cm GW:12.20kg NW:11.20kg