

# KARIBAN

**REFERENCE :** K257

**SIZES :** XS\_S\_M\_L\_XL\_XXL\_3XL

**COMPOSITION :**

Main fabric : Ring spun Combed Cotton pique preshrunk - 180

Yarn count: 30/S

Gauge: 24

Main fabric : Ring spun Combed Cotton/Viscose pique preshrunk 90/10 - 180 For heather colors 90%cotton / 10% viscose

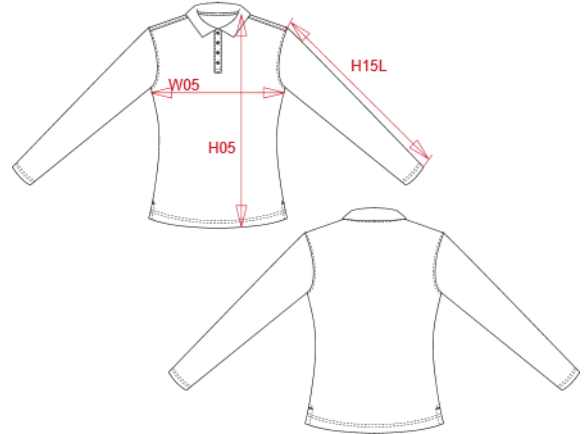
**WEIGHT :**

Main fabric : 180 gsm

Main fabric : 180 gsm

**ARTICLE WEIGHT :**

195 gr/pc



DESCRIPTION								COLORS		PANTONE SERIGRAPHIE	
<b>Français :</b> Polo piqué manches longues femme								White	White		
<b>English :</b> Ladies' piqué long sleeve polo shirt								Black	Black		
<b>Nederlands :</b> Piqué-damespolo lange mouwen								Navy	433C		
<b>Deutsch :</b> Damen Langarm-Polohemd. Baumwollpiqué								Red	200C		
<b>Español :</b> Polo piqué de manga larga para mujer								Dark grey	447C		
<b>Italiano :</b> Polo piqué donna maniche lunghe								Oxford grey	Based on Cool gray 7C		
<b>Português :</b> Polo piqué de senhora de manga comprida								Light royal blue	653C		
MEASUREMENT								Orange	1585C		
Description	XS	S	M	L	XL	XXL	3XL	Yellow	1235C		
<b>H05 (L)</b> Hauteur totale / Total height	60	62	64	66	68	70	72	Forest green	5605C		
<b>W05 (L)</b> 1/2 largeur poitrine à 1.5cm de l'emmanchure / 1/2 chest width at 1.5cm below armhole	43	46	49	52	55	58	61	Wine	504C		
<b>H15L (L)</b> Longueur manche longue / Long sleeve length	57,75	58,75	59,75	60,75	61,75	62,75	63,75	Sky blue	278C		
								Tropical blue	7468C		
								Fuchsia	7425C		
								Kelly green	7727C		
CARE LABEL											
PACKING											
Box	40 pcs / box XS-S => L:60cm W:40cm H:23cm GW:9.80kg NW:8.00kg M-L => L:60cm W:40cm H:26cm GW:10.20kg NW:8.30kg XL => L:60cm W:40cm H:26cm GW:11.80kg NW:9.80kg XXL-3XL => L:60cm W:40cm H:26cm GW:11.90kg NW:9.90kg										