

KARIBAN

REFERENCE : K394

SIZES : XS_S_M_L_XL_XXL

COMPOSITION :

Main fabric : Combed cotton single pique - 170 100%cotton

Main fabric : Combed cotton / viscose single pique 90/10 - 170

For heather colors 90%cotton / 10%viscose

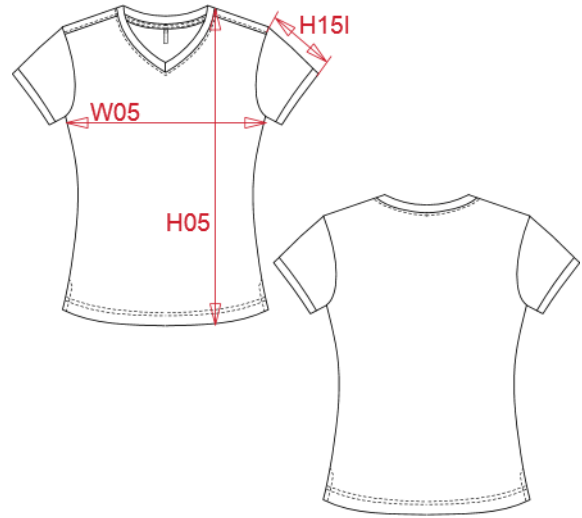
WEIGHT :

Main fabric : 170 gsm

Main fabric : 170 gsm

ARTICLE WEIGHT :

140 gr/pc



DESCRIPTION								COLORS		PANTONE SERIGRAPHIE	
Français : T-shirt maille piquée col V femme								Navy / Light grey / White		433C / 402C / White	
English : Ladies' piqué knit V-neck T-shirt								White / Navy / Red		White / 433C / 200C	
Nederlands : Dames-t-shirt piqué V-hals								Oxford grey / Navy / White		Base Cool gray 7C/296C/White	
Deutsch : Piqué-T-Shirt mit V-Ausschnitt für Damen								Red / Navy / White		200C / 433C / White	
Español : Camiseta de punto piqué con cuello de pico de mujer								Navy / Red / White		433C / 200C / White	
Italiano : T-shirt piqué donna scollo a V								Black / Light grey / White		Black / 402C / White	
Português : T-shirt de malha piqué de senhora com decote V											
MEASUREMENT											
Description	XS	S	M	L	XL	XXL					
H05 (L) Hauteur totale / Total height	58,75	60,75	62,75	64,75	66,75	68,75					
W05 (L) 1/2 largeur poitrine / 1/2 chest width	43	46	49	52	55	58					
H151 (L) Longueur manche avec bord côte / Sleeve length with rib	14,75	15,50	16,25	17	17,75	18,50					
CARE LABEL											
PACKING											
Box	50 pcs / box XS=> L:60cm W:40cm H:20cm GW:7.4kg NW:6.4kg S => L:60cm W:40cm H:20cm GW:7.9kg NW:6.9kg M => L:60cm W:40cm H:20cm GW:8.4kg NW:7.4kg L => L:60cm W:40cm H:20cm GW:8.9kg NW:7.9kg XL => L:60cm W:40cm H:25cm GW:9.6kg NW:8.6kg XXL => L:60cm W:40cm H:25cm GW:10.4kg NW:9.4kg										