

KARIBAN

REFERENCE : K585

SIZES : XS_S_M_L_XL_XXL

COMPOSITION :

Main fabric : Peached cotton twill - 155 100%cotton

Main fabric : Cotton / Polyester oxford 70/30 - For inner collar band and inner cuffs 70%cotton / 30%polyester

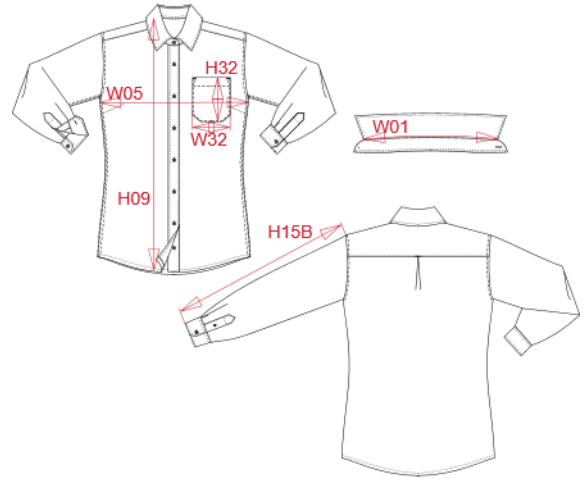
WEIGHT :

Main fabric : 155 gsm

Main fabric : 135 gsm

ARTICLE WEIGHT :

230 gr/pc



DESCRIPTION							COLORS		PANTONE SERIGRAPHIE		
Français : Chemise coton Nevada manches longues femme							White	White			
English : Ladies' Nevada long sleeve cotton shirt							Black	Black			
Nederlands : Damesoverhemd met lange mouwen van katoen Nevada							Navy	433C			
Deutsch : Langarm-Baumwollhemd für Damen							Dark grey	447C			
Español : Camisa de algodón Nevada de manga larga para mujer							Angora	482C			
Italiano : Camicia donna Nevada in cotone manica lunga							Red	200C			
Português : Camisa Nevada de senhora de manga comprida							Sky blue	278C			
							Light khaki	7764C			
MEASUREMENT											
Description	XS	S	M	L	XL	XXL					
W01 (M) Longueur encolure / Neckline length	37,50	38,75	40	41,25	42,50	43,75					
H09 (M) Hauteur totale devant / Front total height	66	68	70	72	74	76					
W05 (L) 1/2 largeur poitrine à 1.5cm de l'emmanchure / 1/2 chest width at 1.5cm below armhole	47	50	53	56	59	62					
H15B (M) Longueur manche avec poignet / Sleeve length with cuff	59	60	61	62	63	64					
H32 (M) Hauteur poche devant / Front pocket height	12	12	12	13	13	14					
W32 (M) Largeur poche devant / Front pocket width	10	10	10	11	11	12					
CARE LABEL											
PACKING											
Box	20 pcs / box										
	XS => L:52cm W:36cm H:33cm GW:6.70kg NW:5.45kg										
	S => L:52cm W:36cm H:33cm GW:7.00kg NW:5.75kg										
	M => L:52cm W:36cm H:33cm GW:7.10kg NW:5.85kg										
	L => L:52cm W:36cm H:33cm GW:7.50kg NW:6.25kg										
	XL => L:52cm W:36cm H:33cm GW:8.00kg NW:6.75kg										
	XXL => L:52cm W:36cm H:33cm GW:8.15kg NW:6.90kg										