

KARIBAN

REFERENCE : K753

SIZES : 34_36_38_40_42_44_46

COMPOSITION :

Main fabric : Washed Cotton twill - 200 100%cotton
Lining : Cotton chambray - 130 For pocket bag , fly piping,
inside waist and back rise 100%cotton

WEIGHT :

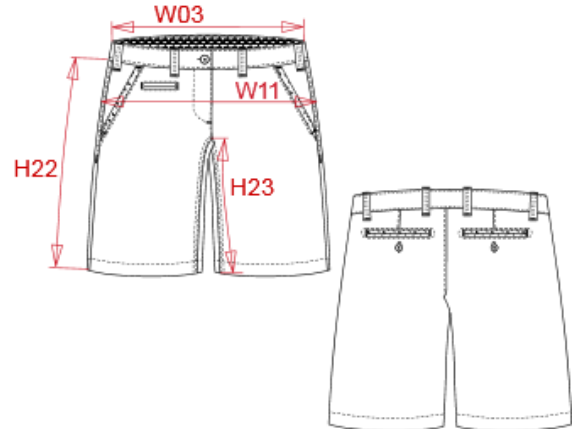
Main fabric : 200 gsm
Lining : 130 gsm

TECHNICAL DETAIL :

Enzyme washed

ARTICLE WEIGHT :

250 gr/pc



DESCRIPTION	COLORS	PANTONE SERIGRAPHIE
Français : Bermuda aspect délavé femme	Washed charcoal	447C
English : Ladies' washed effect bermuda shorts	Washed marsala	7616C
Nederlands : Damesbermuda met verwassen look	Washed smoky blue	Cool gray 8C
Deutsch : Bermuda-Shorts für Damen im ausgewaschenen Look	Washed light khaki	7764C
Español : Bermuda efecto lavado para mujer	Washed navy	432C
Italiano : Bermuda donna aspetto slavato		
Português : Bermuda pré-lavada de senhora		

MEASUREMENT							
Description	34	36	38	40	42	44	46
W03 (L)* 1/2 largeur haut de taille / 1/2 top of waist width	36	37,50	39,50	41,50	43,50	45,50	47,50
W11 (L)* 1/2 bassin / 1/2 hip width	46	48	50	52	54	56	58
H22 (L)* Longueur côté / Side length	39,50	40	40,50	41,50	42	43	43,50
H23 (L)* Longueur entrejambe / Inside leg length	23	23	23	23,50	23,50	24	24

CARE LABEL				

PACKING	
Box	25 pcs / box 34 => L: 60cm W: 40 cm H:17 cm GW:7.85 kg NW: 6.25 kg 36 => L: 60cm W: 40 cm H:17 cm GW:8.00 kg NW:6.40 kg 38 => L: 60cm W: 40 cm H:17 cm GW: 8.30kg NW: 6.70 kg 40 => L: 60cm W: 40 cm H:17 cm GW:8.50 kg NW:6.85 kg 42 => L:60 cm W: 40 cm H:19 cm GW:8.85 kg NW:7.15 kg 44 => L:60 cm W: 40 cm H:19 cm GW: 9.10kg NW:7.40 kg 46 => L:60 cm W: 40 cm H:19 cm GW: 9.30kg NW:7.60 kg