

KARIBAN

REFERENCE : K982

SIZES : XS_S_M_L_XL_XXL_3XL

COMPOSITION :

Main fabric : Jersey Cotton / Polyamide / Elastane knit 87/11/2 - 330 87%cotton / 11%polyamide / 2%elastane

Main fabric : Jersey Cotton / Polyamide / Elastane knit 87/11/2 - 330 For fancy stripe on inside whole neckline 87%cotton / 11% polyamide / 2%elastane

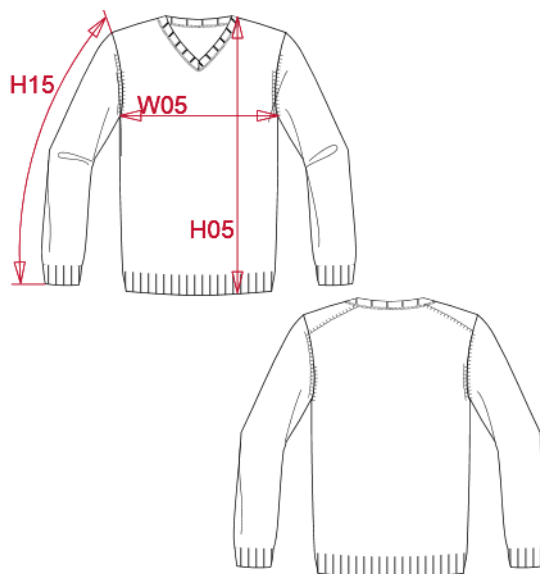
WEIGHT :

Main fabric : 330 gsm

Main fabric : 330 gsm

ARTICLE WEIGHT :

433 gr/pc



DESCRIPTION
Français : Pullover premium col V
English : Premium V-neck jumper
Nederlands : Premium pullover V-hals
Deutsch : Premium-Pullover mit V-Ausschnitt
Español : Jersey Premium con cuello de pico
Italiano : Pullover premium scollo a V
Português : Pullover premium com decote em V

COLORS	PANTONE SERIGRAPHIE
Black heather	Based on 447C
Navy heather	Based on 432C
Candy pink heather	Based on 7432C
Camel heather	7504C
Mykonos blue heather	Based on 7694C
Light grey heather	Based on 877C

MEASUREMENT							
Description	XS	S	M	L	XL	XXL	3XL
H05 (M) Hauteur totale / Total height	66,50	68,50	70,50	72,50	74,50	76,50	78,50
W05 (M) 1/2 largeur poitrine / 1/2 chest width	46	49	52	55	58	61	64
H15L (M) Longueur manche longue / Long sleeve length	63,50	65	66,50	68	69,50	71	72,50

CARE LABEL

PACKING	
Box	20 pcs / box XS => L:60cm W:40cm H:21cm GW:8.45kg NW:7.15kg S => L:60cm W:40cm H:21cm GW:9.00kg NW:7.70kg M => L:60cm W:40cm H:21cm GW:9.5kg NW:8.2kg L => L:60cm W:40cm H:21cm GW:10.00kg NW:8.6kg XL => L:60cm W:40cm H:23cm GW:10.7kg NW:9.35kg XXL => L:60cm W:40cm H:23cm GW:11.35kg NW:9.95kg 3XL => L:60cm W:40cm H:23cm GW:12.00kg NW:10.60kg