

KARIBAN

REFERENCE : KV2202

SIZES : S M L XL XXL 3XL

COMPOSITION :

Main fabric : Peached cotton jersey 190 100%cotton

Fabric 2 : Cotton twill 200 For outer and inner collar band and under placket 100%cotton

WEIGHT :

Main fabric : 190 gsm

Fabric 2 : 200 gsm

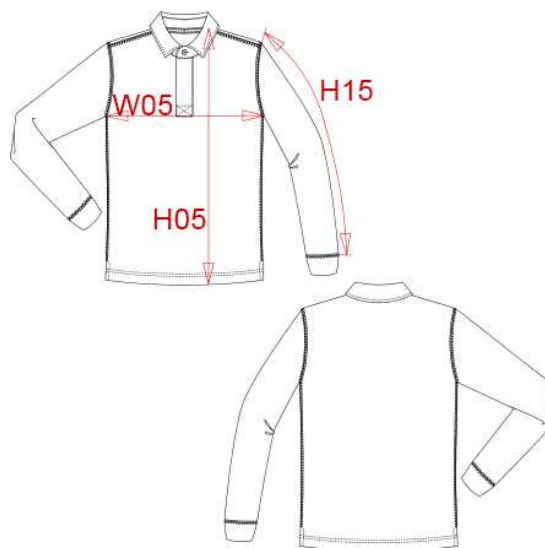
FABRIC CONSTRUCTION AND FINISHING :

Size S & 3XL not available for Vintage charcoal / Reactive dyed

- 24gg

ARTICLE WEIGHT :

350 gr/pc



DESCRIPTION									
Français : Polo rugby manches longues									
English : Men's long sleeve rugby polo shirt									
Nederlands : Rugbypolo met lange mouwen									
Deutsch : Herren langarm rugby-polo									
Español : Polo rugby de manga larga									
Italiano : Polo rugby uomo maniche lunghe									
Português : Polo rugby manga comprida									
MEASUREMENT									
Description	Tol +/-	Tol +/- Taille max	S	M	L	XL	2XL	3XL	
H05 Hauteur totale / Total height			71,50	73,50	75,50	77,50	79,50	82,25	
W05 1/2 largeur poitrine / 1/2 chest width	3,0%	2,5%	48	51	54	57	60	64	
H15 Longueur manche sans poignet / Sleeve length without cuff			59,50	61	62,50	64	65,50	67	
CARE LABEL									
PACKING									
Box	20 pcs / box S => L:60cm W:40cm H:20cm GW:7.45kg NW:5.95kg M => L:60cm W:40cm H:20cm GW:7.71kg NW:6.21kg L => L:60cm W:40cm H:20cm GW:7.94kg NW:6.44kg XL => L:60cm W:40cm H:22cm GW:8.55kg NW:7.05kg XXL => L:60cm W:40cm H:22cm GW:8.87kg NW:7.37kg 3XL => L:60cm W:40cm H:22cm GW:9.36kg NW:7.86kg								

COLORS	PANTONE SERIGRAPHIE
Vintage charcoal	446C
Vintage navy	533C
Vintage red	7427C
Vintage blue	2144C