

# KARIBAN

**REFERENCE :** KV2312

**SIZES :** XS\_S\_M\_L\_XL\_XXL\_3XL

**COMPOSITION :**

Main fabric : Peached and brushed Cotton / Polyester fleece  
80/20 - 350 For body / hood / sleeves and pocket bags 80%  
cotton / 20%polyester

Lining : Sherpa polyester - 280 For inside body / sleeves and  
hood 100%polyester

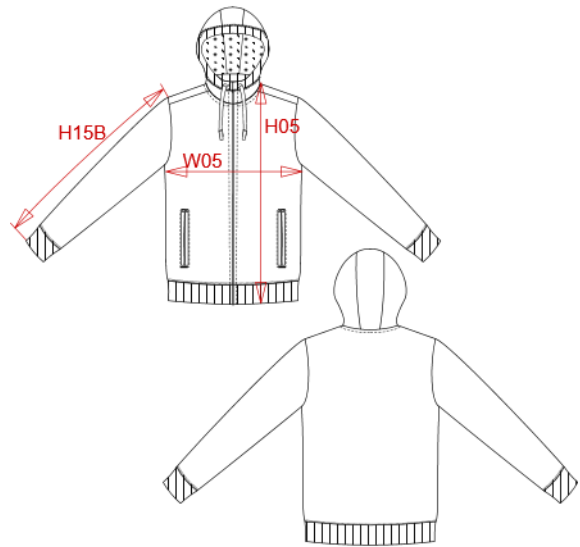
**WEIGHT :**

Main fabric : 350 gsm

Lining : 280 gsm

**ARTICLE WEIGHT :**

1480 gr/pc



DESCRIPTION
<b>Français :</b> Veste vintage molleton doublée sherpa
<b>English :</b> Vintage sherpa-lined fleece jacket
<b>Nederlands :</b> Vintage fleecejas met sherpavoering
<b>Deutsch :</b> Vintage Fleecejacke mit Sherpa-Futter
<b>Español :</b> Chaqueta vintage de felpa con forro de sherpa
<b>Italiano :</b> Giacca vintage in felpa foderata in sherpa
<b>Português :</b> Casaco vintage com forro em sherpa

COLORS	PANTONE SERIGRAPHIE
Slub grey heather	Based on 7539C
Night blue heather	Based on 432C

MEASUREMENT							
Description	XS	S	M	L	XL	XXL	3XL
<b>H05 (M)</b> Hauteur totale / Total height	67,50	69,50	71,50	73,50	75,50	77,50	79,50
<b>W05 (M)</b> 1/2 largeur poitrine à 1.5cm de l'emmanchure / 1/2 chest width at 1.5cm below armhole	49,50	52,50	55,50	58,50	61,50	64,50	67,50
<b>H15B (M)</b> Longueur manche avec poignet / Sleeve length with cuff	66	67	68	69	70	71	72

CARE LABEL				

PACKING	
Box	5 pcs / box XS => L:60cm W:40cm H:30cm GW:7.7kg NW:6.2kg S => L:60cm W:40cm H:30cm GW:8kg NW:6.5kg M => L:60cm W:40cm H:30cm GW:8.3kg NW:6.8kg L => L:60cm W:40cm H:30cm GW:8.6kg NW:7.1kg XL => L:60cm W:40cm H:32cm GW:9kg NW:7.5kg XXL => L:60cm W:40cm H:32cm GW:9.5kg NW:8kg 3XL => L:60cm W:40cm H:32cm GW:9.9kg NW:8.4kg