

NS905



Pullover griccolo in Lyocell TENCEL™ da uomo




A proposito di

- Capo realizzato con Lyocell, una fibra ecologica vegetale
- Tessuto traspirante e resistente.
- Taglio aderente, per una vestibilità perfetta.

50% cotone biologico pettinato / 50% Lyocell TENCEL™*. * TENCEL™ è un marchio di Lenzing AG Calibro 14. Taglio aderente. Materiale principale collo tubolare costine 1 x 1. Finitura tubolare nel materiale principale per fondo capo e fondo manica. Lavorato a maglia in « Fully Fashion ». Peso medio in altezza L: 200g.

 165 g/m² 

Taglie

 S - M - L - XL - XXL - 3XL

Informazioni complementari

Logistica

Paese d'origine

Codice doganale



5



20

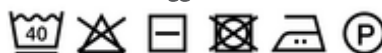


BD - Bangladesh



61103099

Istruzioni di lavaggio



Colori



Beige
Sand
Heather



Navy
Blue



Organic
Khaki
Heather

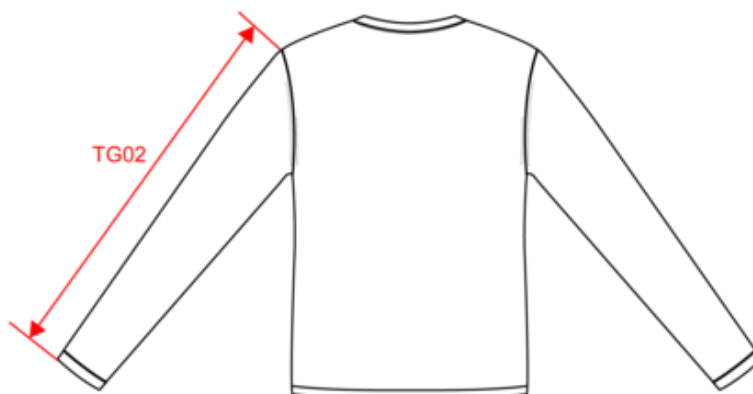
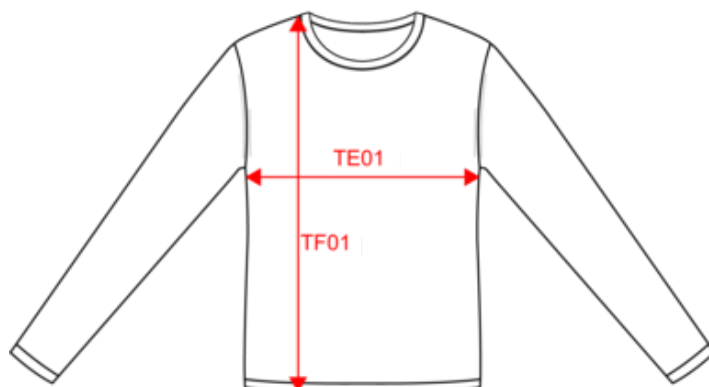
Certificazioni



NS905

Pullover griccolo in Lyocell TENCEL™ da uomo

Dimensioni



Measurements in cm	S	M	L	XL	XXL	3XL
TE01 - 1/2 chest width at 1.5cm below armhole	50.00	53.00	56.00	59.00	62.00	65.00
TF01 - Total height from HSP	70.00	72.00	74.00	76.00	78.00	80.00
TG02 - Long sleeve length	65.00	66.00	67.00	68.00	69.00	70.00

native  spirit

NS905

Pullover gricollo in Lyocell TENCEL™ da uomo

Informazioni colori

 Beige Sand HeatherRVB :
Pantone C : Based on 7501C
Pantone TCX : 13-1012TCX Navy BlueRVB : 41,45,57
Pantone C : 433C
Pantone TCX : 19-4010TCX Organic Khaki HeatherRVB :
Pantone C : Based on 418C
Pantone TCX : Based on 19-0307TCX

Logistica



5



20

Sizes	Width (cm)	Height (cm)	Length (cm)	Net weight (kg)	Gross weight (kg)	Pieces/Box	Pieces/Bundle
S	40.00	11.00	60.00	3.74000	5.74000	20	5
M	40.00	11.00	60.00	4.04000	6.04000	20	5
L	40.00	11.00	60.00	4.35000	6.35000	20	5
XL	40.00	13.00	60.00	4.67000	6.67000	20	5
XXL	40.00	13.00	60.00	5.00000	7.00000	20	5
3XL	40.00	13.00	60.00	5.35000	7.35000	20	5