

PROACT.®

REFERENCE : PA235

SIZES : XS_S_M_L_XL_XXL_3XL

COMPOSITION :

Main fabric : Brushed Polyester / Elastane jersey 90/10 - 270
For back, inner and outer collar and under front tab 90%
polyester / 10%elastane

Main fabric : Nylon ripstop 430T PA coating - 35 For front,
pocket facing, collar yoke and back facing 100%polyamide

Main fabric : Polyester ripstop 430T PA coating - 35 For front,
pocket facing, collar yoke and back facing 100%polyester

Wad 1 : Polyfil 160 For inner fronts padded 100%polyester

Lining : Polyester 210T - 60 For inner front and pocket sacks
100%polyester

WEIGHT :

Main fabric : 270 gsm

Main fabric : 35 gsm

Main fabric : 35 gsm

Wad 1 : 160 gsm

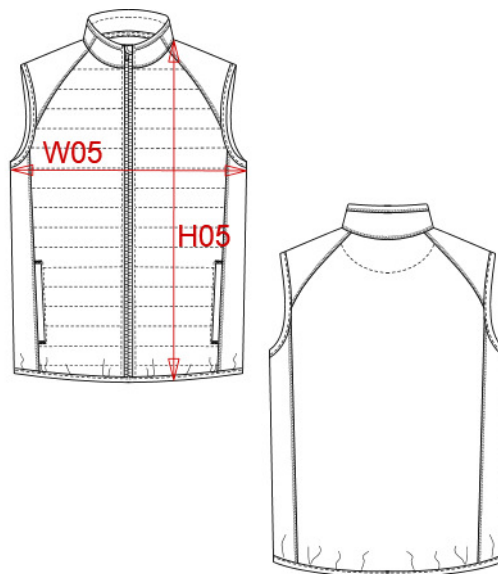
Lining : 60 gsm

TECHNICAL DETAIL :

Wate-repellent fabric 1 + 2

ARTICLE WEIGHT :

312 gr/pc



DESCRIPTION
Français : Veste sport bi-matière sans manches
English : Dual-fabric sleeveless sports jacket
Nederlands : Sportjas in twee stoffen zonder mouwen
Deutsch : Sportweste aus Bi-Material
Español : Chaleco deportivo dos-materiales
Italiano : Giacca sportiva bimeriale smanicata
Português : Colete de desporto bi-matéria

COLORS	PANTONE SERIGRAPHIE
Black	Black
Dark royal blue / Black	654C / Black
Sporty grey / Black	425C / Black
Sporty navy	7546C
Sporty red	1805C
Marl grey / Sporty navy	877C / 7546C
Lime / Black	367C / Black

MEASUREMENT							
Description	XS	S	M	L	XL	XXL	3XL
H05 (M) Hauteur totale / Total height	66	68	70	72	74	76	78
W05 (M) 1/2 largeur poitrine / 1/2 chest width	46	49	52	55	58	61	64

CARE LABEL

PACKING	
Box	15 pcs / box XS => L:60cm W:40cm H:22cm GW:6kg NW:4.5kg S => L:60cm W:40cm H:22cm GW:6kg NW:4.5kg M => L:60cm W:40cm H:22cm GW:6kg NW:4.5kg L => L:60cm W:40cm H:22cm GW:6.5kg NW:5kg XL => L:60cm W:40cm H:22cm GW:6.5kg NW:5kg XXL => L:60cm W:40cm H:22cm GW:6.5kg NW:5kg 3XL => L:60cm W:40cm H:22cm GW:7kg NW:5.5kg