

PROACT.®

REFERENCE : PA469

SIZES : XS_S_M_L_XL_XXL

COMPOSITION :

Main fabric : Polyester birdseye - 160 100%polyester

WEIGHT :

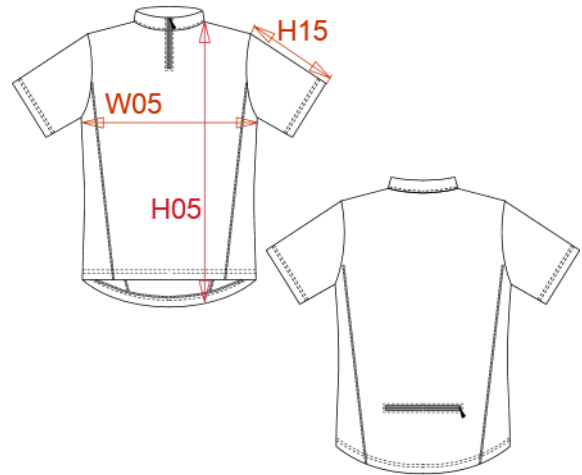
Main fabric : 160 gsm

TECHNICAL DETAIL :

Quick dry fabric

ARTICLE WEIGHT :

180gr/pc



DESCRIPTION								COLORS	PANTONE SERIGRAPHIE
Français : T-shirt cycliste femme English : Ladies' bike T-shirt Nederlands : Dames biking sportshirt Deutsch : Radler damen T-shirt Español : Camiseta ciclista para mujer Italiano : T-shirt donna bike Português : T-shirt de senhora de ciclismo								White	White
MEASUREMENT									
Description	XS	S	M	L	XL	XXL			
W05 (L) 1/2 largeur poitrine à 1.5cm de l'emmanchure / 1/2 chest width at 1.5cm below armhole	41	44	47	50	53	56			
CARE LABEL									
PACKING									
Box	50 pcs / box XS => L:48cm W:35cm H:26cm GW:5.60kg NW:3.90kg S => L:48cm W:35cm H:26cm GW:6.00kg NW:4.30kg M => L:50cm W:36cm H:26cm GW:6.20kg NW:4.50kg L => L:50cm W:36cm H:26cm GW:6.40kg NW:4.70kg XL => L:55cm W:39cm H:26cm GW:6.60kg NW:4.90kg XXL => L:55cm W:39cm H:26cm GW:6.90kg NW:5.20kg								