

# B&C X-LITE SOFTSHELL /WOMEN - JW 938

## SOFTSHELL JACKET



Media player compatible:  
small opening for earphone  
cord in right chest pocket  
+ hidden earphone loop  
on the collar



Chin protector



Full front reverse  
zip fastener  
with zip pull

Right chest zipped  
pocket with reverse zip  
fastening, garage  
& zip pull

Full inner placket  
in outer Softshell fabric

Performance fit:  
ergonomic body shape  
articulated raglan sleeves



2 front zipped  
pockets

Adjustable cuffs  
with rubber tab



Adjustable bottom  
hem with elasticated  
drawcords and stoppers



Elasticated cuffs  
and bottom hem

### High performance 3-layer Softshell jacket - Light Pack jacket

**Outer layer:** 94% polyester - 6% elastane  
Woven Softshell (300 g/m<sup>2</sup> -  
total weight - all layers)

**Mid layer:** bonded breathable membrane,  
windproof, waterproof

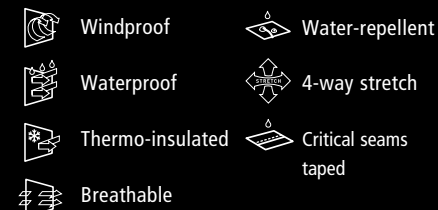
**Inner layer:** 100% polyester mesh

**Waterproof:** 5000 mm

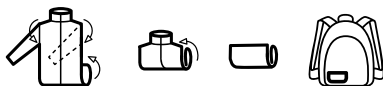
**Breathable:** 5000 MVP

XS - S - M - L - XL - 2XL

1 pc/pack & 10 pcs/carton



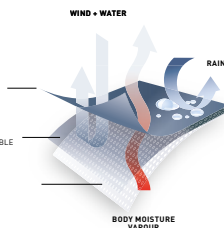
### B&C LIGHT PACK CONCEPT:



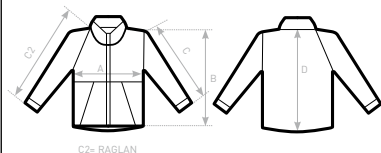
**OUTER LAYER**  
WOVEN WATER  
REPELLENT FABRIC  
(94% PES - 6% ELASTANE)

**MEMBRANE LAYER**  
BONDED WATERPROOF,  
WINDPROOF AND BREATHABLE  
MEMBRANE

**INNER LAYER**  
100% PES MESH LINING



**DUO**  
**CONCEPT**  
with B&C X-Lite  
Softshell /men



### SIZES [CM]

B&C X-LITE SOFTSHELL /W. JW 938	XS	S	M	L	XL	2XL	3XL
A HALF CHEST	44,5	47,5	50,5	53,5	57,5	61,5	-
B BODY LENGTH FROM NECK POINT	63	64,5	66	67,5	69	70,5	-
C2 SLEEVE LENGTH	72,2	73,7	75,1	76,5	78,7	80,9	-
D CENTER BACK LENGTH	63	64,1	65,2	66,8	68,1	69,9	-

B&C  
COLLECTION  
**OUTER  
WEAR  
/UNIT**

JACKET | WOMEN