

B&C Black Tie LSL /w. - SW P23

B&C
COLLECTION
THE SHIRT CULTURE
BE INSPIRED

B&C
COLLECTION
THE SHIRT CULTURE
BE INSPIRED



FITTED

- Stretch poplin
- Soft feminine collar
- Cross stitched mother-of-pearl effect buttons
- 2-button adjustable cuffs
 - a. Angular cuffs & thin-square-shaped gauntlets
 - b. Additional cufflink buttonholes
- Darts at bustline & back panel for a feminine shape
- Horizontal last buttonhole
- Curved bottom hem

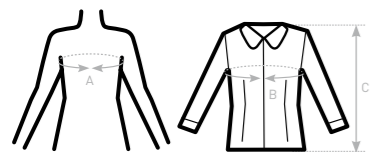
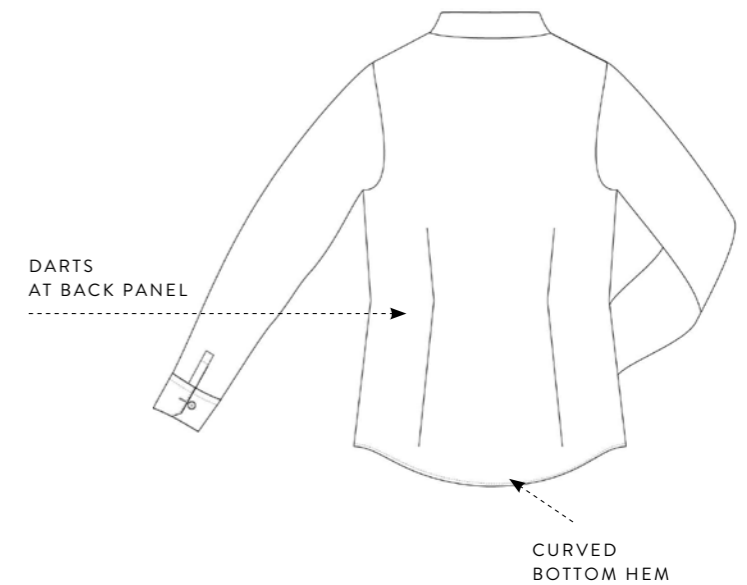
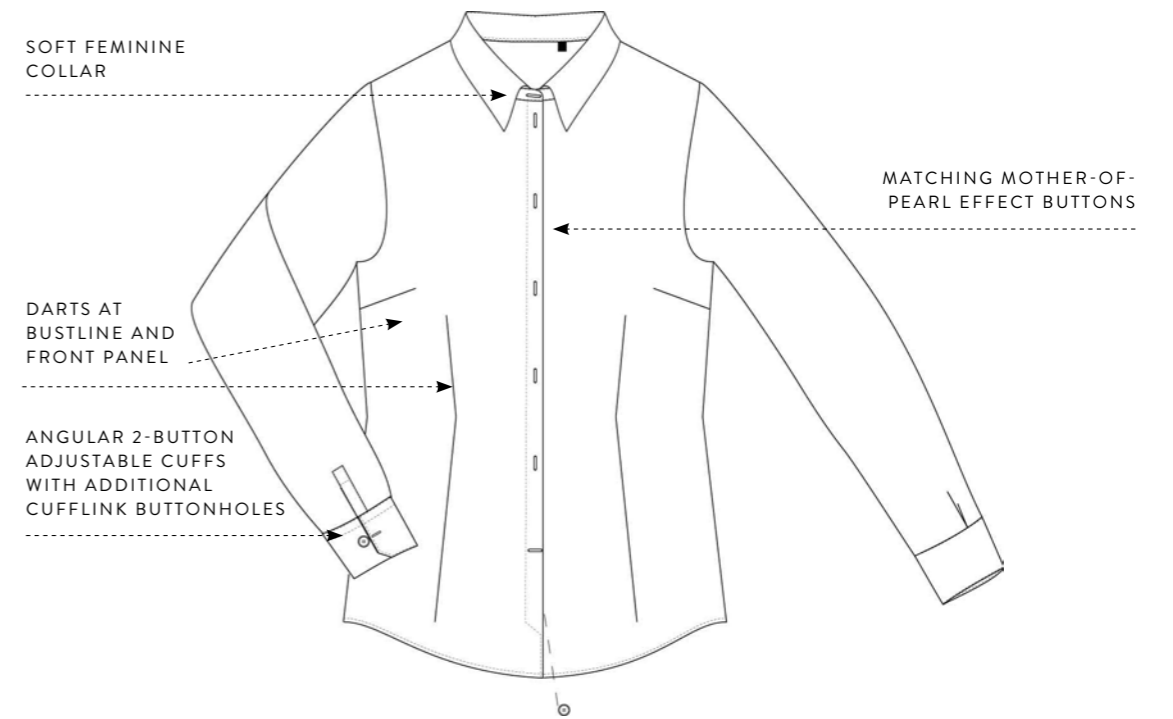


- 97% **combed** cotton - 3% elastane
- Poplin
- 135 g/m² **STRETCH**
- XS > 4XL
- 1 pc/pack & 10 pcs/carton



DUO CONCEPT
with B&C Black Tie LSL / men

STRETCH WOMEN'S LONG SLEEVED EASY CARE POPLIN SHIRT



SIZES [CM]

	US	XS	S	M	L	XL	2XL	3XL	4XL	5XL	6XL
B&C BLACK TIE LSL /w. SW P23	FR	36	38	40	42	44	46	48	50	-	-
A DRESS SIZE	IT	40	42	44	46	48	50	52	54	-	-
	EU	34	36	38	40	42	44	46	48	-	-
	UK	8	10	12	14	16	18	20	22	-	-
B CHEST SIZE	CM	88	93	98	103	108	113	118	123	-	-
C CENTER BACK LENGTH	CM	65	66	67	68	69	70	71	72	-	-



OEKO-TEX®
CONFIDENCE IN TEXTILES
STANDARD 100
1501003 Certirebel
Search for harmful substances
www.oeko-tex.com/standard100