

B&C Patti Slub /women - TW 034

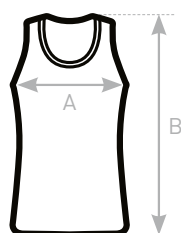
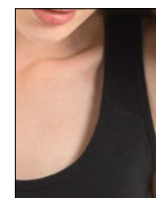


MEDIUM FIT

- Tank Top
- Vintage look (Slub Edition)
- Wide crew neck collar with piping in self fabric and double topstitching
- Self fabric piping at armholes with double topstitching
- Bottom hem with double topstitching
- Trendy cut front & back yokes
- Side seams



- 100% pre-shrunk ring-spun cotton
- Single Jersey with SLUB yarn
- 150 g/m²
- XS - S - M - L - XL
- 5 pcs/pack & 25 pcs/carton



SIZES [CM]

	XS	S	M	L	XL	XXL	XXXL
B&C PATTI CLASSIC /W. TW 262							
B&C PATTI SLUB /W. TW 034							
A HALF CHEST	36	39	42	45	48	-	-
B BODY LENGTH	65,5	66,6	67,7	68,8	70,6	-	-

