

B&C #E190 LSL /WOMEN - TW 08T

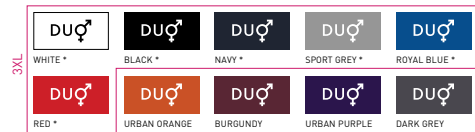
2019 NEW STYLE



REGULAR FIT

The modern long-sleeve T-shirt for women with contemporary look and the unchanged 190g fabric quality by B&C for 20 years.

Your #190bestchoice #longsleeve #women



*COLOURS AVAILABLE IN 3XL

100% pre-shrunk ring-spun cotton

SPORT GREY: 85% PRE-SHRUNK RING-SPUN COTTON - 15% VISCOSE

Single Jersey

185 g/m²

XS - S - M - L - XL - 2XL - 3XL*

10 pcs/pack & 50 pcs/carton

* ONLY AVAILABLE IN WHITE, BLACK, NAVY, SPORT GREY, ROYAL BLUE AND RED



DU
CONCEPT

with B&C #E190 LSL

Want the same style/shape but in a lighter fabric?

TRY THE B&C #E150 LSL /WOMEN

Want the same style/shape but in short sleeve?

TRY THE B&C #E190 /WOMEN

#Style / Fit

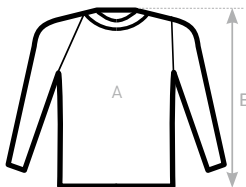
- Mainstream contemporary fit
- #allpurposes**
- Side seams construction
- #feminineshape**
- Thin collar rib to highlight modern neck opening **#uptodate**
- Body length allowing to be worn in and out **#freedomofmovement**
- Same 10 colours for men & women
- #perfectduo**
- 7 sizes - XS to 3XL **#fitsall**
- Satin label **#ultrasofttouch**

#Quality / Handfeel

- Made of 100% cotton **#protectmyskin**
- #Oeko-Tex100**
- Resistant fabric and soft handfeel
- #ringspun**
- Unchanged proven B&C quality fabric
- #20years**
- Heavy weight fabric 190 gsm
- #whatevertheweather**

#Printability / Decoration

- Very smooth and even surface for bright and crisp printing results
- #details**
- Tested and approved for all standard printing techniques applicable on cotton **#beinspired**
- Folded in box to ease the decoration process **#makemylifeeasy**



SIZES [CM]

B&C #E190 LSL /WOMEN TW 08T	XS	S	M	L	XL	2XL	3XL
A HALF CHEST	41	44	47	50	53	56	59
B BODY LENGTH FROM NECK POINT	58	60	62	64	66	68	70



OEKO-TEX®
CONFIDENCE IN TEXTILES
STANDARD 100
1501003 Centexbel
Tested for harmful substances.
www.oeko-tex.com/standard100