

B&C Patti Classic /women - TW 262

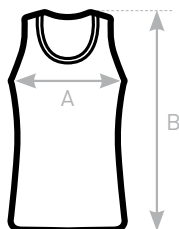
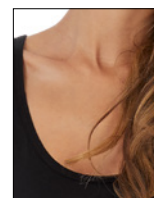


MEDIUM FIT

- Tank Top
- Wide crew neck collar with double topstitching in self fabric
- Self fabric piping at armholes with double topstitching
- Bottom hem with double topstitching
- Trendy front & back yokes
- Side seams



- 100% pre-shrunk ring-spun **combed** cotton
- Single Jersey
- 120 g/m²
- XS - S - M - L - XL
- 5 pcs/pack & 25 pcs/carton



SIZES [CM]

B&C PATTI CLASSIC /W. TW 262	XS	S	M	L	XL	2XL	3XL
A HALF CHEST	36	39	42	45	48	-	-
B BODY LENGTH	65,5	66,6	67,7	68,8	70,6	-	-



OEKO-TEX®
CONFIDENCE IN TEXTILES
STANDARD 100
1501003 Centexbel
Tested for harmful substances.
www.oeko-tex.com/standard100