

B&C ID.206 50/50 - WU 126








REGULAR FIT

Full zip sweatjacket with "B&C No Label" solution for easy rebranding. Versatile style designed for all types of activity.



UNISEX STYLE

designed to fit both men and women

-  50% cotton, 50% polyester
-  Brushed fleece inside
-  270 g/m²
-  XS - S - M - L - XL - 2XL
-  10 pcs/pack & 30 pcs/carton

Fabric

- This full zip sweatjacket is cut from soft premium 270 gsm 50% cotton - 50% polyester fabric:
 - Full bodied hand-feel
 - Fleecy inside

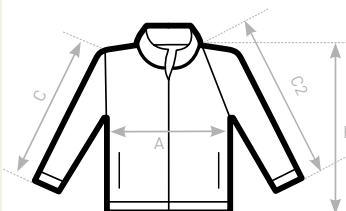
Features

- "B&C No Label" solution for easy rebranding
- Contemporary look designed for all types off activity

- Bottom hem and cuffs with 1x1 elastane rib for a perfect fit
- Straddle stitched seams on armhole for strength and optimal wearing comfort
- Welt pockets for a sophisticated look
- Self fabric collar
- Long lasting qualitative tone-on-tone coil zip with metal slider and puller
- Regular fit
- Set-in sleeves
- Side seams

Decoration

- Smooth surface fabric made to be decorated
- Kissing (covered) zip for full front decoration
- Fabric has been tested to ensure it delivers great results across a range of decoration techniques (Screen print, transfer, embroidery)
- Pocketing of welt pocket is tone on tone and made of single-jersey (=less thickness) which makes it easier to decorate



SIZES [CM]

B&C ID.206 50/50 WU 126	XS	S	M	L	XL	2XL	3XL	4XL
A HALF CHEST	48	51	54	57	60	63	-	-
B BODY LENGTH FROM NECK POINT	65	67	69	71	73	75	-	-
C SLEEVE LENGTH	65	66	67	68	69	70	-	-

