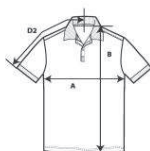


Activewear Europe 2018

**3800****Ultra Cotton Adult Pique Polo Shirt****DETAILS**

Weight	214.0 G/SqM (White 205.0 G/SqM)
Content	100% Ring Spun Cotton
Features	Contoured welt collar and cuffs Satin label Clean finished placket with reinforced bottom box 3 woodtone buttons Twin needle bottom hem Quarter-turned to eliminate center crease
Sizes	S-2XL
Case Packs	S - 2XL 36 PIECES 4XL - 5XL 12 PIECES
Colours	15
SKU's	75

**SPECIFICATIONS**

Centimeters	Tol-	Tol+	S	M	L	XL	2XL
Chest (A)	2.540	2.540	48.260	53.340	58.420	63.500	68.580
Length from HPS (B)	2.540	2.540	72.390	76.200	78.740	81.280	83.820
Sleeve length (Center back) (D2)	1.905	1.905	43.815	47.625	51.435	55.245	59.055
Inches	Tol-	Tol+	S	M	L	XL	2XL
Chest (A)	1.000	1.000	19.000	21.000	23.000	25.000	27.000
Length from HPS (B)	1.000	1.000	28.500	30.000	31.000	32.000	33.000
Sleeve length (Center back) (D2)	0.750	0.750	17.250	18.750	20.250	21.750	23.250

S-2XL

COLOURS	Code	Comments
Black	036	
Carolina Blue	109	
Charcoal	042	
Dark Heather	108	50% Cotton, 50% Polyester
Forest Green	033	
Kiwi	186	
Light Blue	069	
Maroon	083	
Navy	032	
Purple	081	
Red	040	
Ring Spun Sport Grey	295	90% Cotton, 10% Polyester
Royal	051	
Sand	038	
White	030	

CHANGES

Total Net Change 0 SKU's