

Activewear Europe 2018



64000L

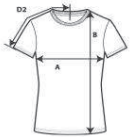
Softstyle Ladies' T-Shirt



DETAILS

Weight 153.0 G/SqM (White 144.0 G/SqM)
Content 100% Ring Spun Cotton
Features Fitted silhouette with side seam
 High stitch density for smoother printing surface
 Seamless twin needle 1.3 cms collar
 Taped neck and shoulders
 Tearaway label
 Twin needle sleeve and bottom hems

Sizes S-2XL
Case Packs S - 2XL 72 PIECES
Colours 30
SKU's 150



SPECIFICATIONS

Centimeters	Tol-	Tol+	S	M	L	XL	2XL
Chest (A)	2.540	2.540	40.640	43.180	46.990	49.530	55.880
Length from HPS (B)	2.540	2.540	64.135	66.675	69.215	71.120	72.390
Sleeve length (Center back) (D2)	1.905	1.905	29.210	30.480	31.750	33.655	35.560
Inches	Tol-	Tol+	S	M	L	XL	2XL
Chest (A)	1.000	1.000	16.000	17.000	18.500	19.500	22.000
Length from HPS (B)	1.000	1.000	25.250	26.250	27.250	28.000	28.500
Sleeve length (Center back) (D2)	0.750	0.750	11.500	12.000	12.500	13.250	14.000

S-2XL

COLOURS	Code	Comments
Antique Cherry Red	246	90% Cotton, 10% Polyester
Antique Heliconia	247	90% Cotton, 10% Polyester
Antique Sapphire	254	90% Cotton, 10% Polyester
Azalea	071	
Black	036	
Charcoal	042	
Cherry Red	194	
Chestnut	084	
Cobalt	445	
Cornsilk	475	
Daisy	098	
Dark Chocolate	105	
Dark Heather	108	35% Cotton, 65% Polyester
Heather Orange	259	35% Cotton, 65% Polyester
Heather Purple	232	35% Cotton, 65% Polyester
Heliconia	010	
Indigo Blue	080	
Irish Green	167	
Kiwi	186	
Light Blue	069	
Light Pink	020	
Mint Green	455	
Navy	032	
Purple	081	
Red	040	
Ring Spun Sport Grey	295	90% Cotton, 10% Polyester
Royal	051	
Sand	038	

Activewear Europe 2018

S-2XL

COLOURS

Sapphire
White

Code	Comments
026	
030	

CHANGES

Total Net Change 0 SKU's