

Activewear Europe 2018



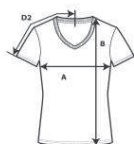
## 64V00L

### Softstyle Ladies' V-Neck T-Shirt



#### DETAILS

|                   |  |
|-------------------|--|
| <b>Weight</b>     | 153.0 G/SqM (White 144.0 G/SqM)  |
| <b>Content</b>    | 100% Ring Spun Cotton  |
| <b>Features</b>   | Fitted silhouette with side seam<br>High stitch density for smoother printing surface<br>1.3 cms mitered v-neck collar<br>Taped neck and shoulders<br>Tearaway label<br>Twin needle sleeve and bottom hems |
| <b>Sizes</b>      | S-2XL  |
| <b>Case Packs</b> | LS - L2XL 36 PIECES  |
| <b>Colours</b>    | 12   |
| <b>SKU's</b>      | 60   |



#### SPECIFICATIONS

| Centimeters                             | Tol-  | Tol+  | S      | M      | L      | XL     | 2XL    |
|---|-------|-------|--------|--------|--------|--------|--------|
| <b>Chest (A)</b>                        | 2.540 | 2.540 | 40.640 | 43.180 | 46.990 | 49.530 | 55.880 |
| <b>Length from HPS (B)</b>              | 2.540 | 2.540 | 64.135 | 66.675 | 69.215 | 71.120 | 72.390 |
| <b>Sleeve length (Center back) (D2)</b> | 2.540 | 2.540 | 29.210 | 30.480 | 31.750 | 33.655 | 35.560 |
| Inches                                  | Tol-  | Tol+  | S      | M      | L      | XL     | 2XL    |
| <b>Chest (A)</b>                        | 1.000 | 1.000 | 16.000 | 17.000 | 18.500 | 19.500 | 22.000 |
| <b>Length from HPS (B)</b>              | 1.000 | 1.000 | 25.250 | 26.250 | 27.250 | 28.000 | 28.500 |
| <b>Sleeve length (Center back) (D2)</b> | 1.000 | 1.000 | 11.500 | 12.000 | 12.500 | 13.250 | 14.000 |

#### S-2XL

| COLOURS              | Code | Comments                  |
|----------------------|------|---------------------------|
| Azalea               | 071  |                           |
| Black                | 036  |                           |
| Dark Heather         | 108  | 35% Cotton, 65% Polyester |
| Heather Irish Green  | 215  | 35% Cotton, 65% Polyester |
| Heather Purple       | 232  | 35% Cotton, 65% Polyester |
| Irish Green          | 167  |                           |
| Navy                 | 032  |                           |
| Purple               | 081  |                           |
| Red                  | 040  |                           |
| Ring Spun Sport Grey | 295  | 90% Cotton, 10% Polyester |
| Royal                | 051  |                           |
| White                | 030  |                           |

#### CHANGES

Total Net Change 0 SKU's