

# KARIBAN

**REFERENCE :** K208

**SIZES :** XS\_S\_M\_L\_XL\_XXL

**COMPOSITION :**

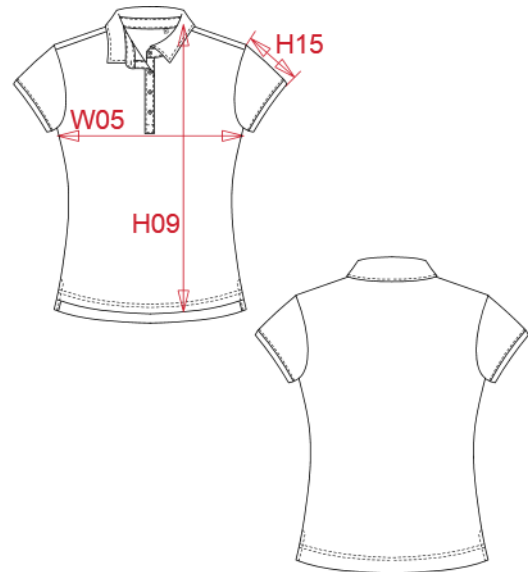
Main fabric : Polyester / Combed Cotton single jersey 65/35 -  
160 65%polyester / 35%cotton

**WEIGHT :**

Main fabric : 160 gsm

**ARTICLE WEIGHT :**

148 gr/pc



DESCRIPTION
<b>Français :</b> Polo manches courtes "mélange" femme
<b>English :</b> Ladies' short sleeve melange polo shirt
<b>Nederlands :</b> Damespolo korte mouwen polykatoen
<b>Deutsch :</b> Damen-Kurzarm-Polo, Mischgewebe
<b>Español :</b> Polo de manga corta «melange» para mujer
<b>Italiano :</b> Polo donna maniche corte mélange
<b>Português :</b> Polo de senhora manga curta em poliéster/algodão

COLORS	PANTONE SERIGRAPHIE
Dark grey heather	Based on 446C
Blue heather	Based on 7545C
Tropical blue heather	Based on 7468C
Red heather	Based on 7523C
Green heather	Based on 556C
White	White

MEASUREMENT							
Description	XS	S	M	L	XL	XXL	
<b>H09 (L)</b> Hauteur totale devant / Front total height	59	61	63	65	67	69	
<b>W05 (M)</b> 1/2 largeur poitrine à 1.5cm de l'emmanchure / 1/2 chest width at 1.5cm below armhole	43	46	49	52	55	58	
<b>H15I (L)</b> Longueur manche avec bord côte / Sleeve length with rib	13,75	14,50	15,25	16	16,75	17,50	

CARE LABEL

PACKING	
Box	25 pcs / box XS-S => L:46cm W:36cm H:15cm GW:4.35kg NW:3.45kg M-L => L:50cm W:37cm H:15cm GW:4.90kg NW:3.90kg XL-XXL => L:52cm W:38cm H:15cm GW:5.35kg NW:4.25kg