

KARIBAN

REFERENCE : K213

SIZES : XS_S_M_L_XL_XXL_3XL_4XL_5XL

COMPOSITION :

Main fabric : Combed cotton heavy single jersey ring spun pre shrunk - 280 For body, sleeves and tape shoulder seam 100% cotton

Fabric 2 : Cotton twill - 200 For collar and tabs 100%cotton

WEIGHT :

Main fabric : 280 gsm

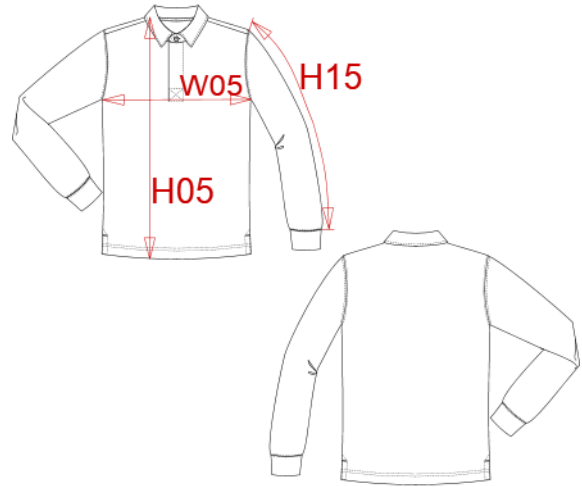
Fabric 2 : 200 gsm

TECHNICAL DETAIL :

Preshrunk

ARTICLE WEIGHT :

406 gr/pc



DESCRIPTION	COLORS	PANTONE SERIGRAPHIE
Français : Polo rugby	Navy / White	433C / White
English : Rugby polo shirt	Black / White	Black / White
Nederlands : Rugbypolo	Light grey / White	416C / White
Deutsch : Rugby-Polohemd	Light royal blue / White	653C / White
Español : Polo de rugby	Wine / White	504C / White
Italiano : Polo rugby	Dark grey / Black	447C / Black
Português : Polo rugby		

MEASUREMENT									
Description	XS	S	M	L	XL	XXL	3XL	4XL	5XL
H05 (M) Hauteur totale / Total height	68	70	72	74	76	78	80	82	84
W05 (M) 1/2 largeur poitrine à 1.5cm de l'emmanchure / 1/2 chest width at 1.5cm below armhole	47	50	53	56	59	62	65	68	71
H15B (M) Longueur manche avec poignet / Sleeve length with cuff	66,25	67	67,75	68,50	69,25	70	70,75	71,50	72,25

CARE LABEL				

PACKING	
Box	25 pcs / box XS => L:60cm W:40cm H:20cm GW:9.8kg NW:8.5kg S => L:60cm W:40cm H:20cm GW:10kg NW:8.7kg M => L:60cm W:40cm H:20cm GW:10.7kg NW:9.3kg L => L:60cm W:40cm H:20cm GW:11kg NW:9.7kg XL => L:60cm W:40cm H:22cm GW:11.7kg NW:10.3kg XXL => L:60cm W:40cm H:22cm GW:12.3kg NW:10.9kg 3XL => L:60cm W:40cm H:22cm GW:11.8kg NW:13.2kg 4XL => L:58cm W:36cm H:32cm GW:14.60kg NW:13.20kg 5XL => L:58cm W:36cm H:33cm GW:15.10kg NW:13.50kg