

KARIBAN

REFERENCE : K216

NAME :

SIZES : S_M_L_XL_2XL_3XL

COMPOSITION :

Main fabric : Jersey 280 For body and contrasted top stripes 100%cotton

Main fabric : Jersey 280 For contrasted sleeves 100%cotton

Main fabric : Jersey 280 For contrasted bottom stripes 100%cotton

Fabric 2 : Cotton twill 200 For collar 100%cotton

WEIGHT :

Main fabric : 280 gsm

Main fabric : 280 gsm

Main fabric : 280 gsm

Fabric 2 : 200 gsm

COLORS	PANTONE SERIGRAPHIE
Black/Light grey/Black/White	Black/428C/Black/White
Navy/Pink/Navy/White	296C/182C/296C/White

DESCRIPTION

Français : Polo rugby manches rayées

English :

Nederlands :

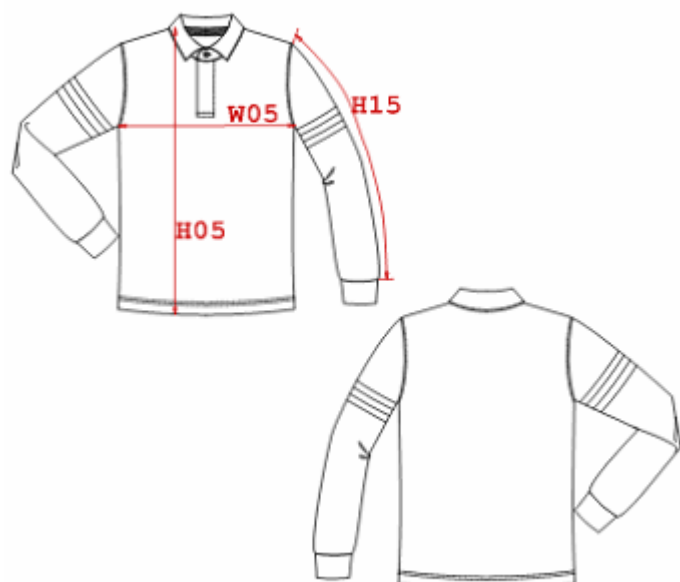
Deutsch :

Español :

Italiano :

Português :

CARE LABEL



MEASUREMENT

Description	S	M	L	XL	2XL	3XL
H05 Hauteur totale / Total height	70	73	75	77	79	81
W05 1/2 largeur poitrine / 1/2 chest width	52	55	58	61	64	67
H15 Longueur manche (sans poignet) / Sleeve length (without cuff)	61,50	62,50	64	65,50	67	68,50

PACKING

Box	
	25 pcs / box
	S => L:60cm W:40cm H:30cm GW:11.37kg NW:10.17kg
	M => L:60cm W:40cm H:30cm GW:11.87kg NW:10.62kg
	L => L:60cm W:40cm H:30cm GW:12.15kg NW:10.90kg
	XL => L:60cm W:40cm H:30cm GW:12.95kg NW:11.70kg
	2XL => L:60cm W:40cm H:30cm GW:14.25kg NW:13.00kg
	3XL => L:60cm W:40cm H:30cm GW:15.55kg NW:14.30kg