

# KARIBAN

**REFERENCE :** K960

**SIZES :** S\_M\_L\_XL\_XXL\_3XL

**COMPOSITION :**

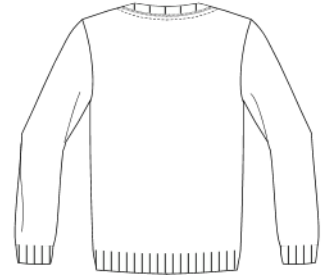
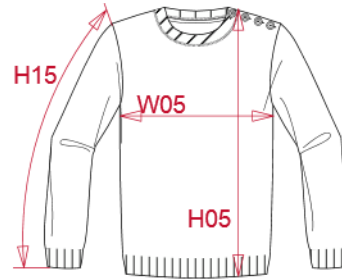
Fabric : Knit Carded Cotton / Acrylic yarn 50/50 - 370 For knitted and sewing 50%cotton / 50%acrylic

**WEIGHT :**

Fabric : ±370 gsm

**ARTICLE WEIGHT :**

399 gr/pc



DESCRIPTION
<b>Français :</b> Pullover fantaisie
<b>English :</b> Decorative knit jumper
<b>Nederlands :</b> Pullover met fantasiesteek
<b>Deutsch :</b> Pullover mit Fantasie-Strick
<b>Español :</b> Jersey punto grueso
<b>Italiano :</b> Pullover fantasia
<b>Português :</b> Pullover fantasia

COLORS	PANTONE SERIGRAPHIE
Navy	433C
Off White	7527C
Deep red	187C

MEASUREMENT							
Description	S	M	L	XL	XXL	3XL	
<b>H05 (M)</b> Hauteur totale / Total height	68	70	72	74	76	78	
<b>W05 (M)</b> 1/2 largeur poitrine à 1.5cm de l'emmanchure / 1/2 chest width at 1.5cm below armhole	50	53	56	59	62	65	
<b>H15B (M)</b> Longueur manche avec poignet / Sleeve length with cuff	65	66	67	68	69	70	

CARE LABEL

PACKING	
Box	20 pcs / box S => L:57cm W:38cm H:23cm GW:9.30kg NW:7.70kg M => L:57cm W:38cm H:23cm GW:9.90kg NW:8.30kg L => L:60cm W:40cm H:23cm GW:10.70kg NW:8.90kg XL => L:60cm W:40cm H:23cm GW:11.20kg NW:9.40 kg XXL => L:65cm W:42cm H:23cm GW:12.20kg NW:10.20kg 3XL => L:65cm W:42cm H:23cm GW:12.90kg NW:10.90kg