



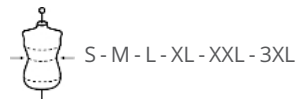
### A proposito di

- Contiene lana merino, un tessuto nobile.
- Finiture del collo curate.
- Lavorazione a maglia "fully fashion".

50% cotone biologico / 50% lana responsabile RWS\*. \* Responsible Wool Standard. Calibro 7. Taglio aderente. Collo con bordo arrotolato nel tessuto principale. Nastrino di rinforzo navy blue per tutte le colorazioni. Fondo capo e fondo manica a costine 2 x 2. Lavorato a maglia in « Fully Fashion ». Peso medio in altezza L: 425g.

370 g/m<sup>2</sup>

### Taglie



### Informazioni complementari

Logistica

Paese d'origine

Codice doganale



5



20

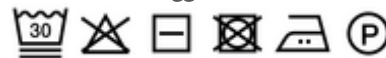


BD - Bangladesh



61102099

### Istruzioni di lavaggio



### Colori



Deep Indigo

Gravel Heather

### Certificazioni



Made with 50% Organic materials. Certified by EcoCert Greenlife in accordance with the OCS standard available at <https://nohillschange.org/> EGL N°16363 / TOPTEX Belgique



Made with 50% Organic materials. Certified by EcoCert Greenlife in accordance with the OCS standard available at <https://nohillschange.org/> EGL N°16360 / TOPTEX France



Made with 50% RWS Wool. Certified by EcoCert Greenlife in accordance with the RWS standard available at <https://nohillschange.org/> EGL N°16955 / NATIVE SPIRIT



Made with 50% RWS Wool. Certified by EcoCert Greenlife in accordance with the RWS standard available at <https://nohillschange.org/> EGL N°16363 / TOPTEX Belgique



Made with 50% RWS Wool. Certified by EcoCert Greenlife in accordance with the RWS standard available at <https://nohillschange.org/> EGL N°16360 / TOPTEX France



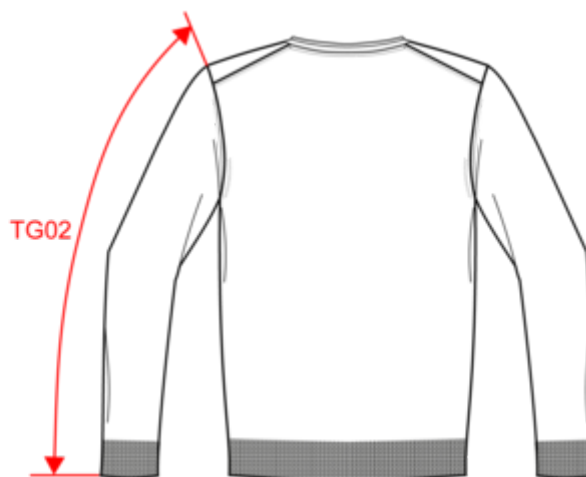
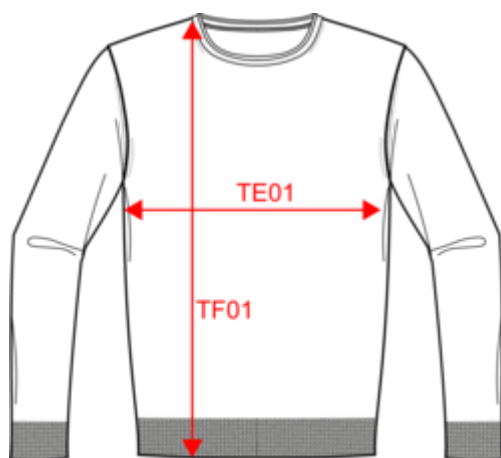
Made with 50% Organic materials. Certified by EcoCert Greenlife in accordance with the OCS standard available at <https://nohillschange.org/> EGL N°16355 / NATIVE SPIRIT



NS910

Pullover uomo in lana merino responsabile

Dimensioni



Measurements in cm	S	M	L	XL	XXL	3XL
TE01 - 1/2 chest width at 1.5cm below armhole	50.00	53.00	56.00	59.00	62.00	65.00
TF01 - Total height from HSP	69.00	71.00	73.00	75.00	77.00	79.00
TG02 - Long sleeve length	65.00	66.00	67.00	68.00	69.00	70.00

native  spirit

NS910

Pullover uomo in lana merino responsabile

## Informazioni colori

 Deep Indigo HeatherRVB :  
Pantone C : Based on 426C  
Pantone TCX : Based on 19-4218TCX Gravel HeatherRVB :  
Pantone C : Based on 403C  
Pantone TCX : Based on 17-0205TCX

## Logistica



5



20

Sizes	Width (cm)	Height (cm)	Length (cm)	Net weight (kg)	Gross weight (kg)	Pieces/Box	Pieces/Bundle
S	40.00	38.00	60.00	7.89000	9.89000	20	5
M	40.00	38.00	60.00	8.56000	10.56000	20	5
L	40.00	38.00	60.00	9.26000	11.26000	20	5
XL	40.00	40.00	60.00	9.98000	11.98000	20	5
XXL	40.00	40.00	60.00	10.73000	12.73000	20	5
3XL	40.00	40.00	60.00	11.51000	13.51000	20	5