




A proposito di

- Capo realizzato con Lyocell, una fibra ecologica vegetale
- Tessuto traspirante e resistente.
- Taglio comodo e spalle cascant.

50% cotone biologico / 50% Lyocell TENCEL™*. * TENCEL™ è un marchio di Lenzing AG. Calibro 12. Taglio regular. Spalle cadenti. Scollo a V. Collo, fondo manica e fondo capo a costine 1 x 1. Lavorato a maglia in « Fully Fashion ». Peso medio in altezza M: 280g.

 250 g/m² 

Taglie

 XS - S - M - L - XL - XXL

Informazioni complementari

Logistica

Paese d'origine

Codice doganale



5



20



BD - Bangladesh



61103099

Istruzioni di lavaggio



Colori



Certificazioni



Made with 50% Organic materials. Certified by Ecocert Greenlife in accordance with the OCS standard available at <https://www.ecocert.org/> EOL N°18363 / TOPTEX Belgique



Made with 50% Organic materials. Certified by Ecocert Greenlife in accordance with the OCS standard available at <https://www.ecocert.org/> EOL N°18360 / TOPTEX France



Made with 50% Organic materials. Certified by Ecocert Greenlife in accordance with the OCS standard available at <https://www.ecocert.org/> EOL N°18355 / NATIVE SPIRIT

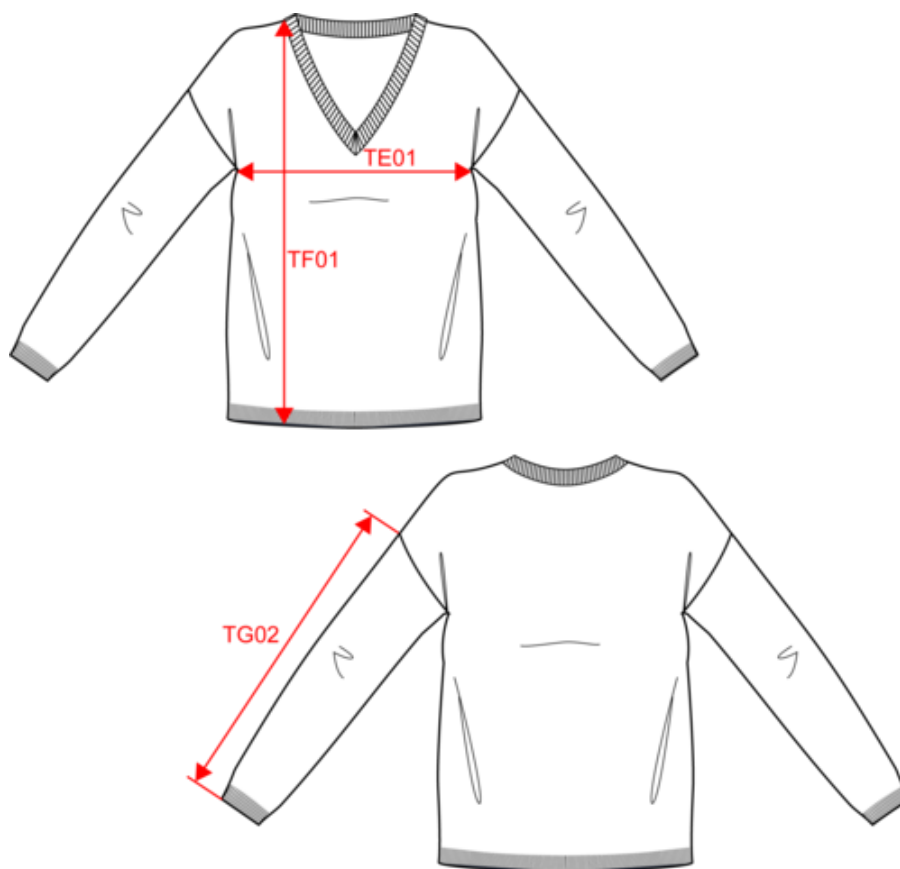


STANDARD 100 CQ 100777 IFTH www.oeko-tex.com

NS921

Pullover donna con Lyocell TENCEL™ con scollo a V

Dimensioni



Measurements in cm	XS	S	M	L	XL	XXL
TE01 - 1/2 chest width at 1.5cm below armhole	50.50	53.50	56.50	59.50	62.50	65.50
TF01 - Total height from HSP	59.00	61.00	63.00	65.00	67.00	69.00
TG02 - Long sleeve length	43.50	44.25	45.00	45.75	46.50	47.25

native  spirit

NS921

Pullover donna con Lyocell TENCEL™ con scollo a V

Informazioni colori

**Black**RVB : 35,35,37
Pantone C : Black
Pantone TCX : 19-4004TCX**Gemstone Green**RVB : 9,132,117
Pantone C : 562C
Pantone TCX : 17-5430TCX**Ivory**RVB : 236,231,218
Pantone C : 7534C
Pantone TCX : 11-0701TCX**Navy Blue**RVB : 41,45,57
Pantone C : 433C
Pantone TCX : 19-4010TCX

Logistica



5



20

Sizes	Width (cm)	Height (cm)	Length (cm)	Net weight (kg)	Gross weight (kg)	Pieces/Box	Pieces/Bundle
XS	40.00	19.00	60.00	5.30000	6.70000	20	5
S	40.00	19.00	60.00	5.60000	7.00000	20	5
M	40.00	19.00	60.00	6.10000	7.50000	20	5
L	40.00	22.00	60.00	6.50000	8.00000	20	5
XL	40.00	22.00	60.00	6.90000	8.40000	20	5
XXL	40.00	22.00	60.00	7.30000	8.80000	20	5