

# PROACT.®

**REFERENCE :** PA343

**SIZES :** XS\_S\_M\_L\_XL\_XXL

**COMPOSITION :**

Main fabric : Polyester diamond cool dry -100 Main fabric for body, sleeve vest, big pocket sacks, front & back facing & neckline loop. 100%polyester

Lining 1 : Mesh 65 Inner body of vest & small pocket sack vest. 100%polyester

Lining : Polyester taffeta 190T - 60 For inner sleeve of vest 100%polyester

**WEIGHT :**

Main fabric : 100 gsm

Lining 1 : 65 gsm

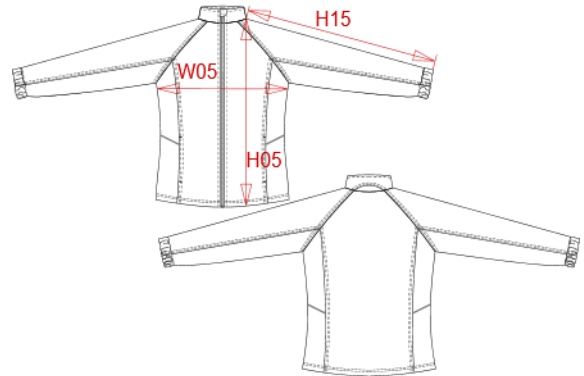
Lining : 60 gsm

**TECHNICAL DETAIL :**

Quick dry fabri

**ARTICLE WEIGHT :**

295 gr/pc



DESCRIPTION	
<b>Français :</b>	Veste de survêtement femme
<b>English :</b>	Ladies' track top
<b>Nederlands :</b>	Dames trainingsjas
<b>Deutsch :</b>	DAMEN TRAININGSJACKE
<b>Español :</b>	Chaqueta de chándal para mujer
<b>Italiano :</b>	GIUBBOTTO DONNA
<b>Português :</b>	Casaco de fato de treino de senhora

COLORS	PANTONE SERIGRAPHIE
Black	Black
Navy	433C
White	White

MEASUREMENT							
Description	XS	S	M	L	XL	XXL	
<b>H05 (L)</b> Hauteur totale / Total height	68,30	69,80	71,30	72,80	74,30	76,50	
<b>W05 (L)</b> 1/2 largeur poitrine / 1/2 chest width	48	50	52	54	56	59	
<b>H15L (L)</b> Longueur manche longue / Long sleeve length	73	75	77	79	81	83	

CARE LABEL				

PACKING	
Box	30 pcs / box All sizes => L:60cm W:40cm H:13cm GW:4.50kg NW:3.50kg