

PROACT.®

REFERENCE : PA468

SIZES : XS_S_M_L_XL_XXL_3XL

COMPOSITION :

Main fabric : Polyester birdseye - 160 100%polyester

WEIGHT :

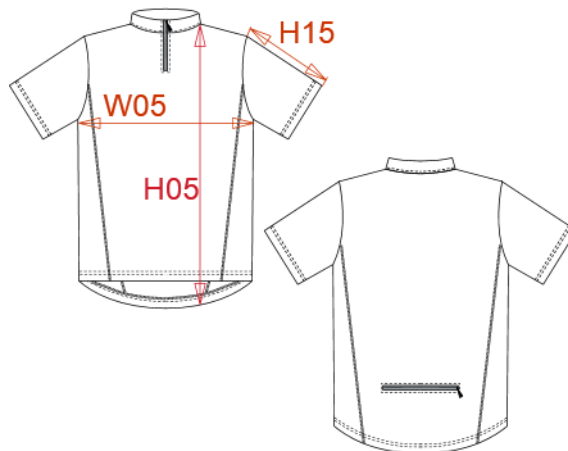
Main fabric : 160 gsm

TECHNICAL DETAIL :

Quick dry fabric

ARTICLE WEIGHT :

200gr/pc



DESCRIPTION								COLORS	PANTONE SERIGRAPHIE
Français : T-shirt cycliste homme English : Men's bike T-shirt Nederlands : Heren biking sportshirt Deutsch : Radler herren T-shirt Español : Camiseta ciclista Italiano : T-shirt uomo bike Português : T-shirt de ciclismo								White	White
MEASUREMENT									
Description	XS	S	M	L	XL	XXL	3XL		
W05 (M) 1/2 largeur poitrine à 1.5cm de l'emmanchure / 1/2 chest width at 1.5cm below armhole	45	48	51	54	57	60	63		
H28 (M) Hauteur totale dos / Back total height	71	73	75	77	79	81	83		
H15C (M) Longueur manche courte / Short sleeve length	24,90	25,60	26,30	27	27,70	28,40	29,10		
CARE LABEL									
PACKING									
Box	50 pcs / box XS-S => L:61cm W:49cm H:21cm GW:9.70kg NW:8.00kg M-L => L:63cm W:49cm H:23cm GW:12.80kg NW:11.10kg XL-XXL => L:65cm W:52cm H:24cm GW:14.90kg NW:13.10kg 3XL => L:69cm W:52cm H:25cm GW:16.00kg NW:14.20kg								